

CHAPTER

23

COMMUNICATIONS

CESSNA®
MODEL 208
 ILLUSTRATED PARTS CATALOG

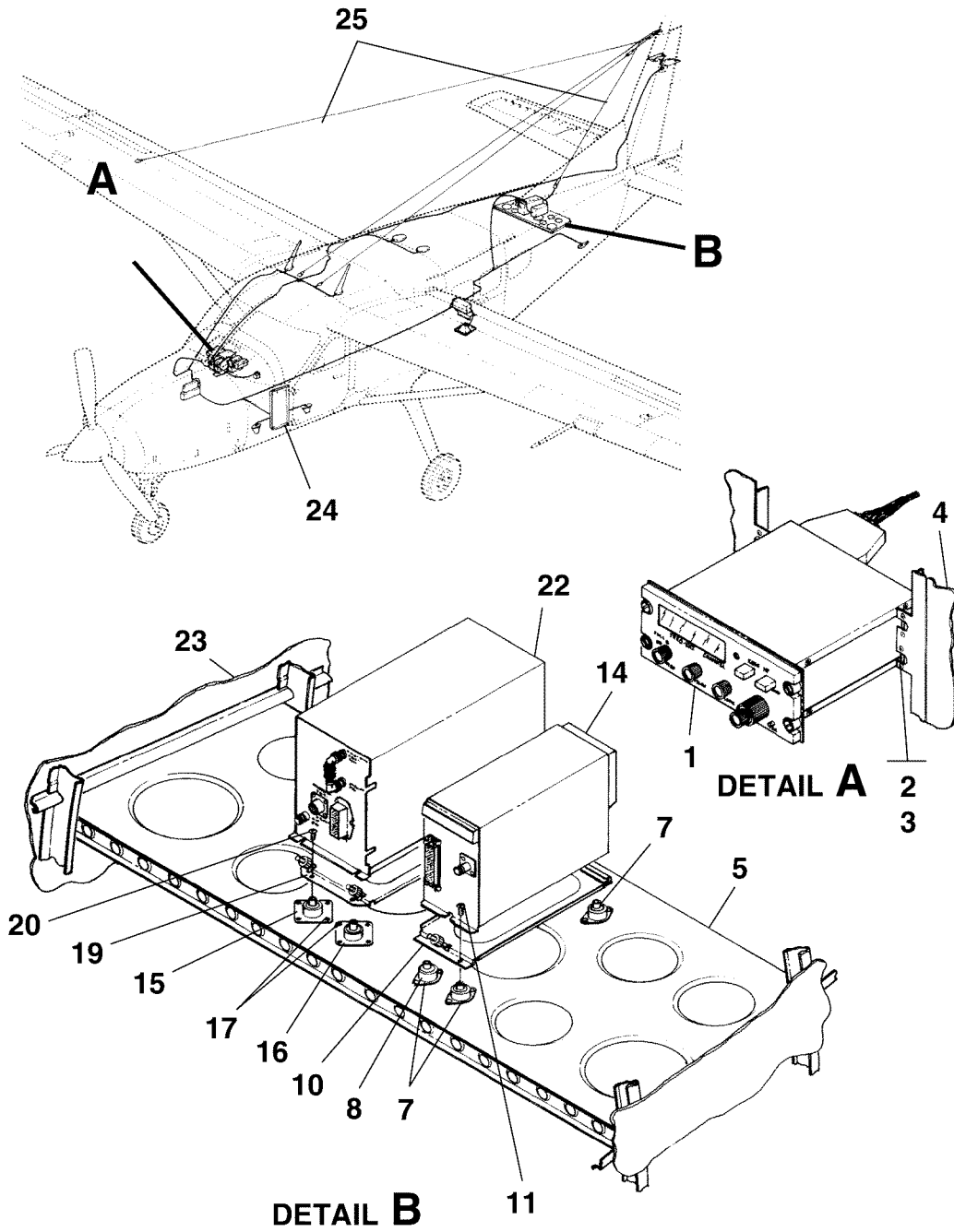
CHAPTER SECTION SUBJECT		NUMBER OF PAGES	DATE
23 - TITLE			
23 - LIST OF EFFECTIVE PAGES			
23 - RECORD OF TEMPORARY REVISIONS			
23 - TABLE OF CONTENTS			
23-10-00	Figure 01	2	Jun 1/2010
23-10-00	Figure 02	2	Mar 1/2020
23-10-01	Figure 01	2	Nov 4/2002
23-10-01	Figure 02	2	Jun 1/2010
23-15-00	Figure 01	2	Mar 1/2015
23-30-00	Figure 01	2	Mar 1/2020
23-50-00	Figure 01	2	Jun 1/2010
23-50-00	Figure 02	2	Mar 1/2015
23-50-00	Figure 03	2	Jun 1/2010
23-50-01	Figure 01	2	Nov 4/2002
23-50-01	Figure 02	2	Mar 1/2020
23-50-02	Figure 01	2	Dec 1/2013
23-50-03	Figure 01	2	Apr 1/2016
23-50-03	Figure 02	2	Mar 1/2020
23-50-04	Figure 01	2	Jun 1/2010
23-50-04	Figure 01A	2	Mar 1/2019
23-50-05	Figure 01	4	Jun 1/2010
23-50-05	Figure 01A	4	Mar 1/2019
23-50-07	Figure 01	2	Jun 1/2010
23-51-00	Figure 01	2	Mar 1/2020
23-51-00	Figure 01A	2	Dec 1/2012
23-60-00	Figure 01	2	Oct 15/1999
23-70-00	Figure 01	2	Sep 1/2016

CESSNA®
MODEL 208
 ILLUSTRATED PARTS CATALOG

<u>SUBJECT</u>	<u>CHAPTER SECTION SUBJECT</u>	<u>FIGURE</u>	<u>EFFECTIVITY</u>	
			<u>START</u>	<u>END</u>
KING KHF950 RADIO INSTALLATION	23-10-00	01	0001 B0180	& ON & ON
KHF 1050 PANELS	23-10-00	02		
FM TRANSCEIVER INSTALLATION	23-10-01	01		
FM ANTENNA INSTALLATION	23-10-01	02		
GSM ANTENNA INSTALLATION	23-15-00	01	B5121	& ON
GSR 56 INSTALLATION	23-30-00	01	0651 B5501	& ON & ON
KING AUDIO/INTERCOM/MARKER BEACON PANEL INSTALLATION - TYPE KMA24	23-50-00	01	0001 B0180	& ON & ON
KING AUDIO/INTERCOM WITH KR-21 MARKER BEACON INSTALLATION - (TYPES KMA24H-70 AUDIO PANEL AND KR-21 MARKER BEACON)	23-50-00	02	0146 B0180	& ON & ON
SPERRY AUDIO/INTERCOM/MARKER BEACON PANEL INSTALLATION	23-50-00	03	0001	0145
SPEAKER INSTALLATION	23-50-01	01		
WIRING BUNDLE ASSEMBLIES - CABIN AUDIO	23-50-01	02	0500 B2000	& ON & ON
MICROPHONE INSTALLATION - HANDHELD	23-50-02	01	0001 B0180	& ON & ON
COMBINATION HEADSET AND MICROPHONE INSTALLATION	23-50-03	01	0001 B0180	& ON & ON
JACK INSTALLATION - HEADPHONE AND MIC	23-50-03	02	0500 B2000	& ON & ON
PUBLIC ADDRESS SPEAKER INSTALLATION - 208	23-50-04	01	0237	0499
PUBLIC ADDRESS SPEAKER INSTALLATION - 208	23-50-04	01A	0500	& ON
PUBLIC ADDRESS SPEAKER INSTALLATION - 208B	23-50-05	01	B0393	B1999
PUBLIC ADDRESS SPEAKER INSTALLATION - 208B	23-50-05	01A	B2000	& ON
MICROPHONE AND SWITCHES INSTALLATION - NAT AA97	23-50-07	01		
AUDIO PANEL INSTALLATION	23-51-00	01	0500 B2000	& ON & ON
OPTIONAL SECOND AUDIO PANEL INSTALLATION - GMA 1347	23-51-00	01A	0533 B2303	& ON & ON
STATIC WICK DISCHARGE INSTALLATION	23-60-00	01		
COCKPIT VOICE RECORDER	23-70-00	01	B0952	& ON

CESSNA®
MODEL 208
ILLUSTRATED PARTS CATALOG

A24372



26143001
A26141005
B26141006

KING KHF950 RADIO INSTALLATION
FIGURE 01 (SHEET 1)

CESSNA®
MODEL 208
ILLUSTRATED PARTS CATALOG

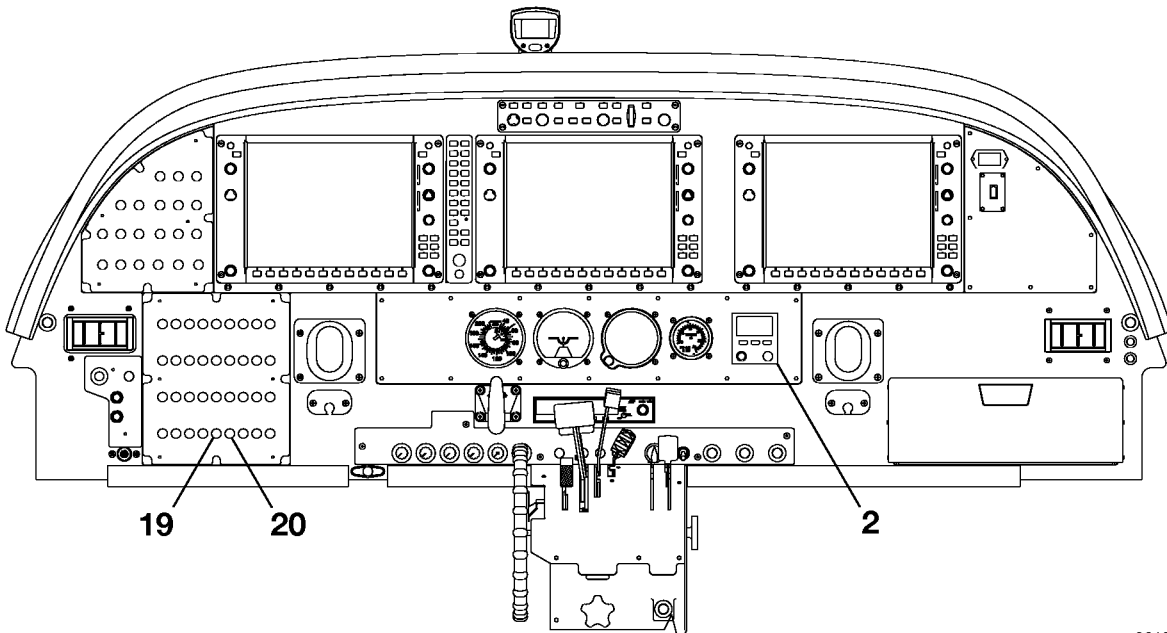
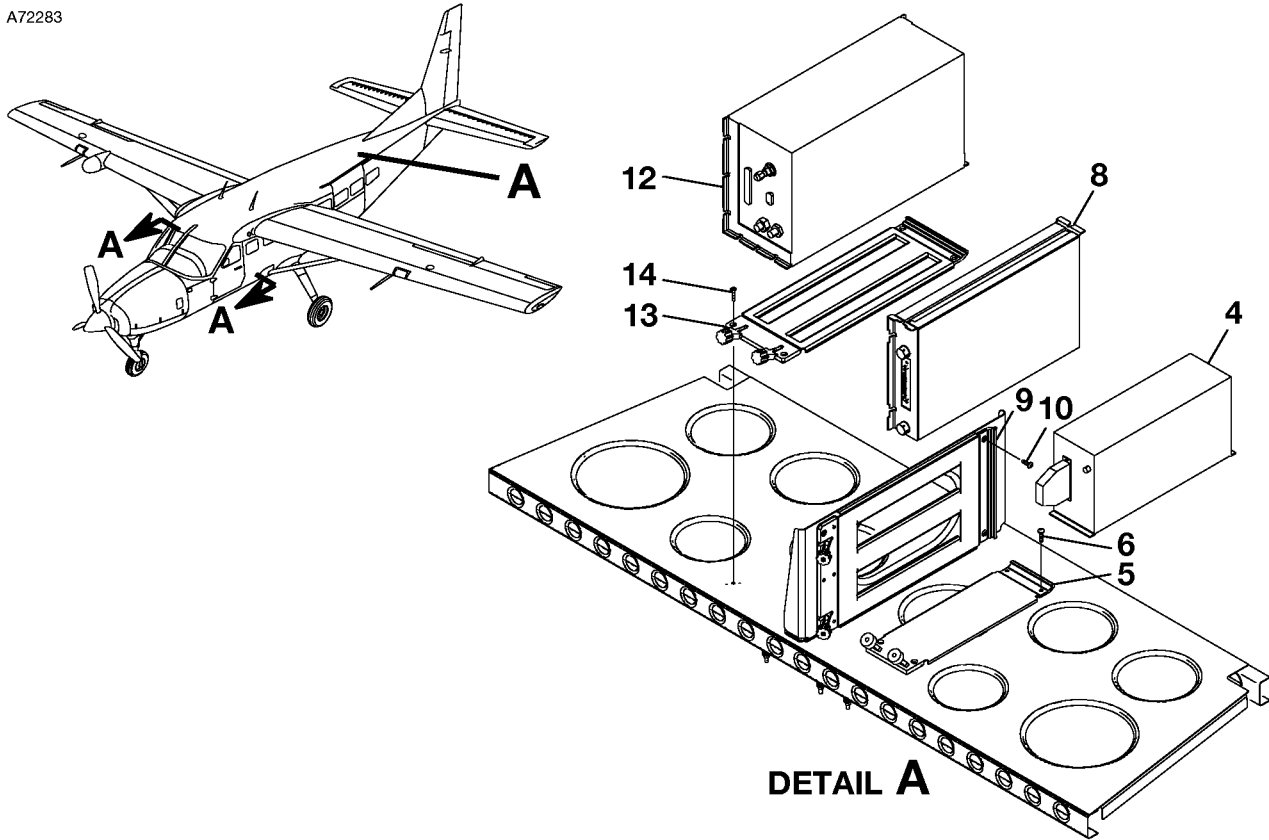
FIG ITEM	PART NUMBER	NOMENCLATURE	UNITS PER ASSY		
			1	2	3
01		KING KH950 RADIO INSTALLATION			
-			0001	& ON	RF
			B0180	& ON	
1	064-01016-0000	. CONTROL UNIT-KCU951 REFER TO NOTE 1 V22373			01
2	PB3-1/2	. WIRE FORM-DZUS ATTACH			04
3	NAS1149FN332P	. WASHER			08 R
4		. INSTRUMENT PANEL ASSEMBLY REFER TO 53-22-01 FIGURE 01			RF
5	2601014-1	. SHELF ASSY	0001	0499	01 R
			B0180	B1999	
- 5A	2601014-31	. SHELF ASSY	0500	& ON	01 R
			B2000	& ON	
- 6	MS21047L08	. NUTPLATE			24
7	052-0007-04	. SHOCK MOUNT-RECEIVER/EXCITER REFER TO NOTE 2 V22373			04
		ATTACHING PARTS			
8	MS35206-246	. SCREW			02
- 9	AN935-8	. LOCKWASHER			02
		—*—			
10	071-4003-03	. MOUNTING TRAY REFER TO NOTE 2 V22373			01
		ATTACHING PARTS			
11	089-5907-06	. SCREW REFER TO NOTE 2 V22373			04
- 12	089-8110-34	. WASHER REFER TO NOTE 2 V22373			04
		—*—			
- 13	047-5914-01	. GROUND STRAP			01
14	064-01015-0001	. RECEIVER/EXCITER-KTR953 V22373			01
15	052-0009-05	. SHOCK MOUNT-OUTBD P/A COUPLER V22373			02
16	052-0009-04	. SHOCK MOUNT-INBD P/A COUPLER V22373			02
		ATTACHING PARTS			
17	MS35206-246	. SCREW			04
- 18	AN935-8	. LOCKWASHER			04
		—*—			
19	071-4030-00	. MOUNTING RACK V22373			01
		ATTACHING PARTS			
20	089-5909-06	. SCREW			04
- 21	089-8006-34	. WASHER			04
		—*—			
22	064-01017-0001	. PA/COUPLER-KAC952 V22373			01
23		. TAILCONE STRUCTURE REFER TO 53-14-00 FIGURE 01			RF
24		. AVIONICS CIRCUIT BREAKER PANEL INSTALLATION REFER TO 24-52-03 FIGURE 01			RF
25		. ANTENNA INSTALLATION REFER TO 34-50-00 FIGURE 04			RF

NOTE 1—REFER TO KING INSTALLATION KIT 050-1846-01 FOR ITEMS NOT LISTED.

NOTE 2—PART OF KING INSTALLATION KIT 050-1848-01, REFER TO KIT FOR ITEMS NOT LISTED.

CESSNA®
MODEL 208
 ILLUSTRATED PARTS CATALOG

A72283



VIEW A-A

KHF 1050 PANELS
 FIGURE 02 (SHEET 1)

2610T7005
 A2618T1436
 AA26181418

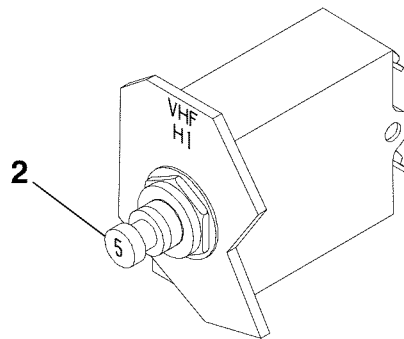
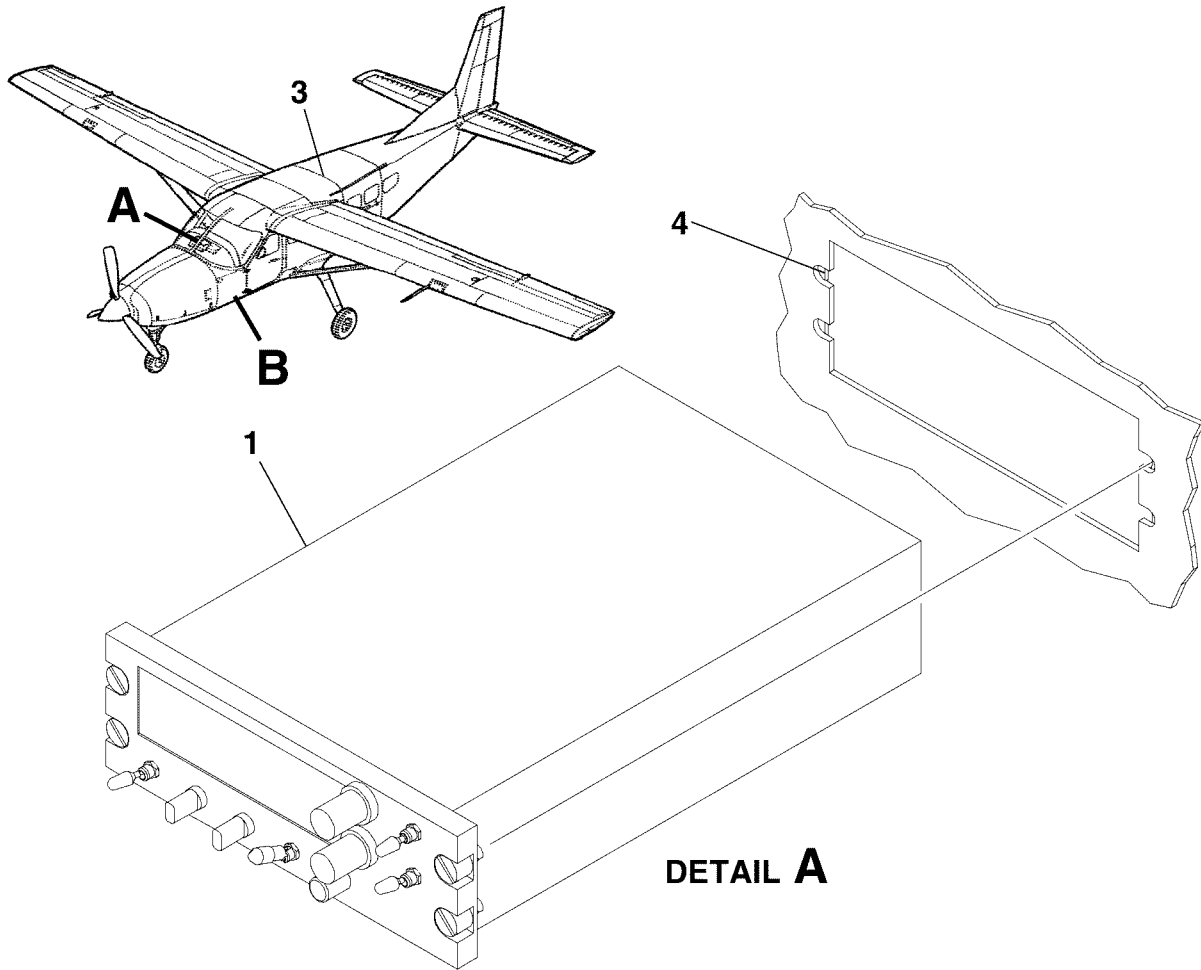
**CESSNA®
MODEL 208
ILLUSTRATED PARTS CATALOG**

FIG ITEM	PART NUMBER	NOMENCLATURE	UNITS PER ASSY		
			1	2	3
02		KHF 1050 PANELS			RF
- 1		. DELETED-NOT USED			
2	071-01605-1201	. PS440 CONTROL UNIT	V22373	0421 & ON B1255 & ON	01
- 3		. DELETED-NOT USED			
4	S3100-449	. KRX-1053 RECEIVER/EXCITER REF 064-01073-0102 (SW MOD 02/01 ONLY)		0421 & ON B1255 & ON	01
5	050-03628-0001	. KRX-1053 TRAY ASSY	V55939	0421 & ON B1255 & ON	01
6	MS35206-246	. SCREW		0421 & ON B1255 & ON	04
- 7		. DELETED-NOT USED			
8	064-01072-0101	. KPA-1052 POWER AMP	V55939	0421 & ON B1255 & ON	01
9	050-03629-0001	. KPA-1052 TRAY ASSY	V55939	0421 & ON B1255 & ON	01
10	MS35206-245	. SCREW		0421 & ON B1255 & ON	04
- 11		. DELETED-NOT USED			
12	S3100-447	. KAC-1052 ANTENNA COUPLER REF 064-01074-0101 (MOD 3, SW 01/05 ONLY)		0421 & ON B1255 & ON	01
13	050-03658-0001	. KAC-1052 TRAY ASSY	V55939	0421 & ON B1255 & ON	01
14	MS24694-S8	. SCREW		0421 & ON B1255 & ON	04
- 15	047-06261-0036	. GROUND STRAP	V22373	0421 & ON B1255 & ON	01
- 16		. DELETED-NOT USED			
- 17		. DELETED-NOT USED			
- 18	MS35489-6	. GROMMET		0421 0499 B1255 B1999	01
19	S1232-505	. CIRCUIT BREAKER (H1045)		0421 & ON B1255 & ON	01
20	S1232-530	. CIRCUIT BREAKER (H1046)		0421 & ON B1255 & ON	01
- 21	3926302-1	. WIRING ASSY-HF COMM MAIN ASSY		0500 & ON B2000 & ON	01
- 22	3926302-2	. WIRING ASSY-HF CABIN INTERFACE		0500 0650 B2000 B5500	01 R
- 22A	3926302-5	. WIRING ASSY-HF CABIN INTERFACE		0651 & ON B5501 & ON	01 R
- 23	3926302-3	. WIRING ASSY-HF ANTENNA COAXES		0500 & ON B2000 & ON	01

- ITEM NOT ILLUSTRATED

CESSNA®
MODEL 208
ILLUSTRATED PARTS CATALOG

A24385



DETAIL B

VIEW LOOKING OUTBOARD LEFT SIDE

FM TRANSCEIVER INSTALLATION
FIGURE 01 (SHEET 1)

261070041
A2618T1265
B2618T1264

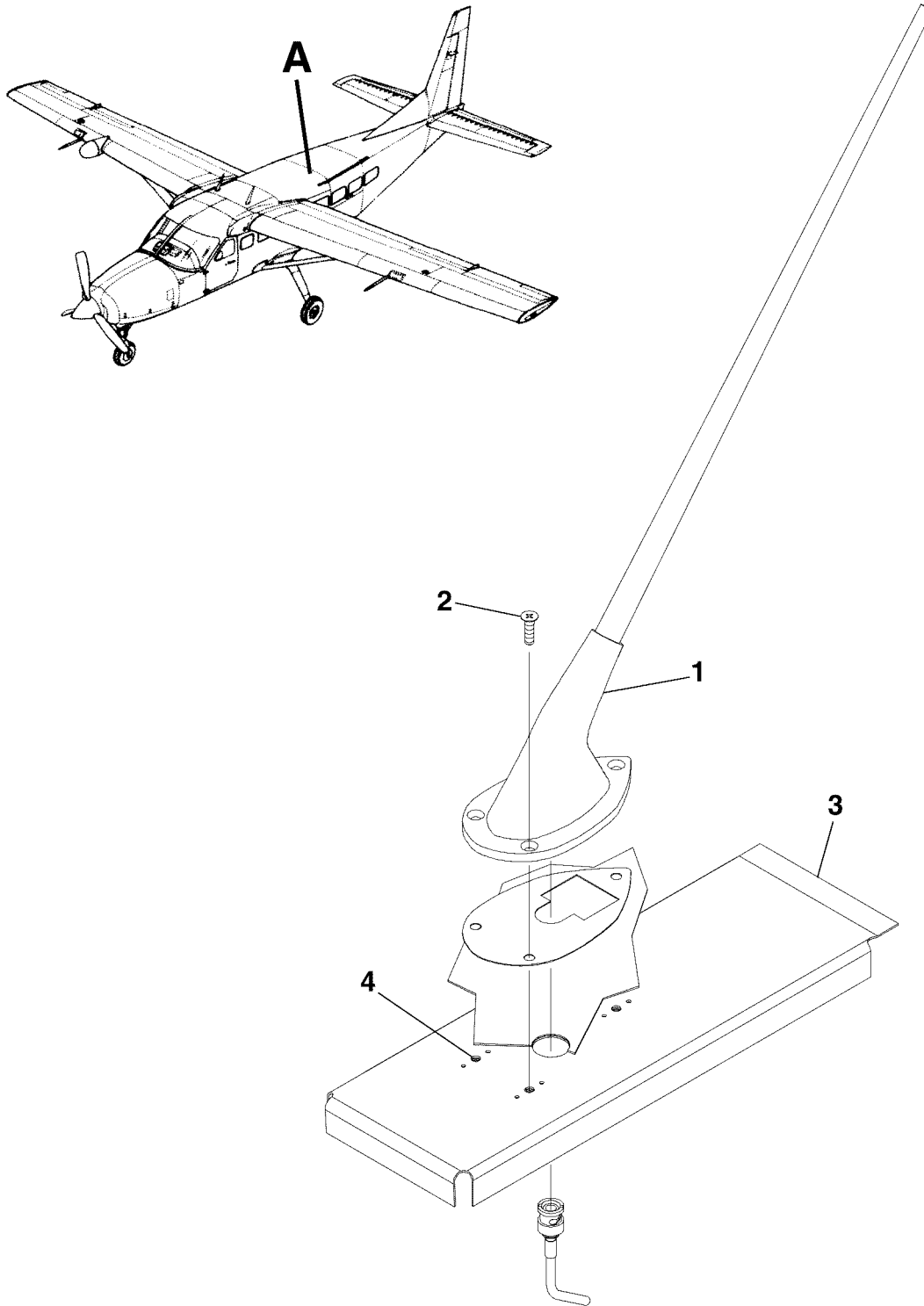
CESSNA®
MODEL 208
 ILLUSTRATED PARTS CATALOG

FIG ITEM	PART NUMBER	NOMENCLATURE	UNITS PER ASSY
01			
-		FM TRANSCEIVER INSTALLATION	RF R
1	NPX138-000	. FM TRANSCEIVER UNIT V63563	01 R
2	S1232-505	. CIRCUIT BREAKER	01 R
3		. ANTENNA INSTALLATION	RF R
4	PB35	. WIRE FORM V72794	04 R

- ITEM NOT ILLUSTRATED

CESSNA®
MODEL 208
ILLUSTRATED PARTS CATALOG

A24336



DETAIL A

FM ANTENNA INSTALLATION
FIGURE 02 (SHEET 1)

26107004
A2618T1266

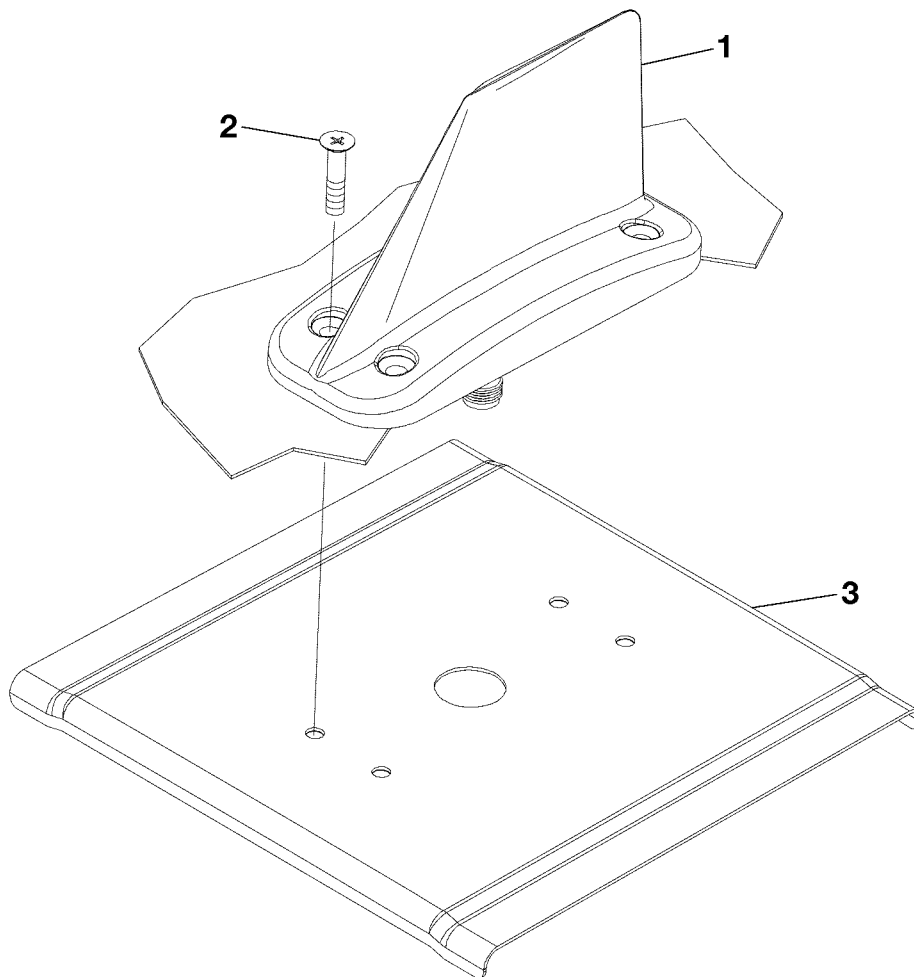
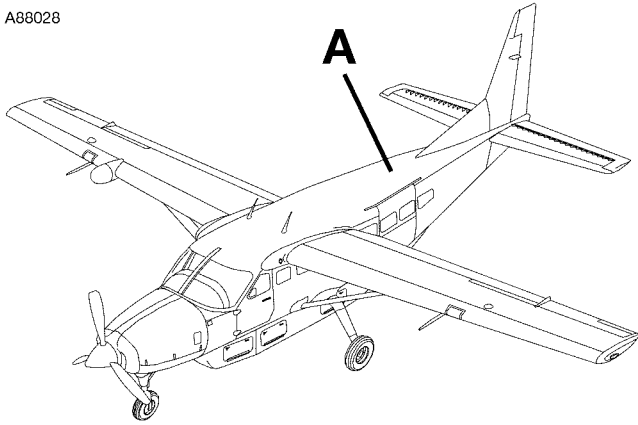
CESSNA®
MODEL 208
 ILLUSTRATED PARTS CATALOG

FIG ITEM	PART NUMBER	NOMENCLATURE	UNITS PER ASSY
	1 2 3 4 5 6 7		
02		FM ANTENNA INSTALLATION	
-			RF
1	C1177-13	. FM ANTENNA	01
2	MS24694-S52	. . SCREW	03 R
3	2698011-3	. DOUBLER	01
4	MS21047L3	. NUTPLATE	03

- ITEM NOT ILLUSTRATED

CESSNA®
MODEL 208
ILLUSTRATED PARTS CATALOG

A88028



DETAIL A

GSM ANTENNA INSTALLATION
FIGURE 01 (SHEET 1)

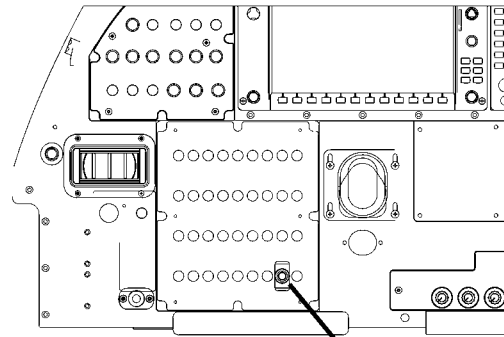
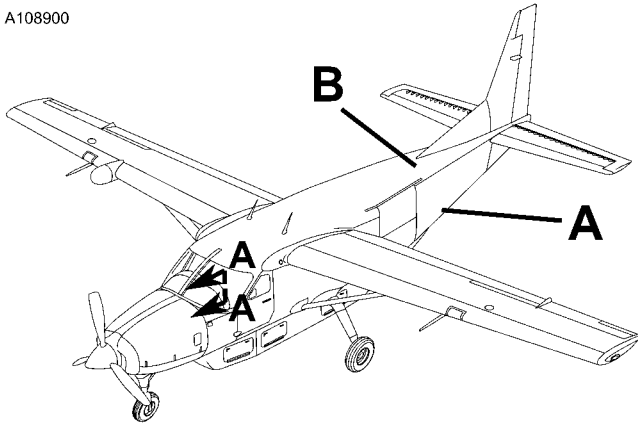
2610T7004
A2618T1474

CESSNA®
MODEL 208
 ILLUSTRATED PARTS CATALOG

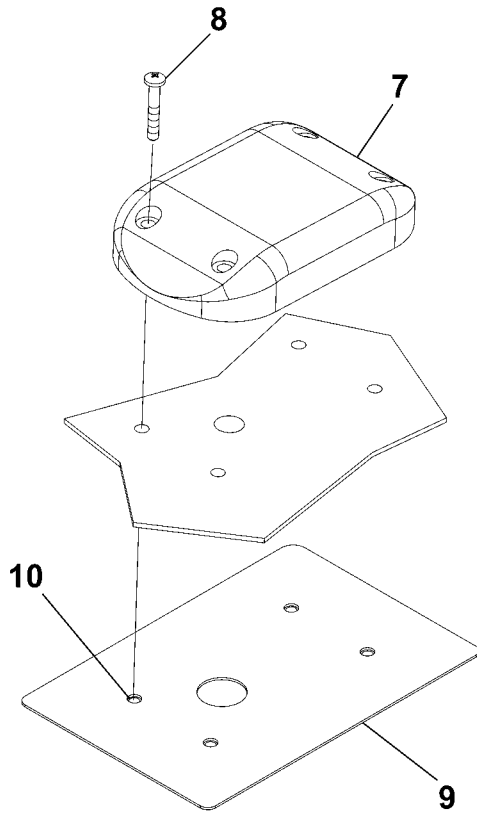
FIG ITEM	PART NUMBER	NOMENCLATURE							UNITS PER ASSY
		1	2	3	4	5	6	7	
01		GSM ANTENNA INSTALLATION							
-									B5121 & ON RF R
1	S65-5366-715	.							01
2	MS24693-S275	.							04
3	2618508-2	.							01

CESSNA®
MODEL 208
ILLUSTRATED PARTS CATALOG

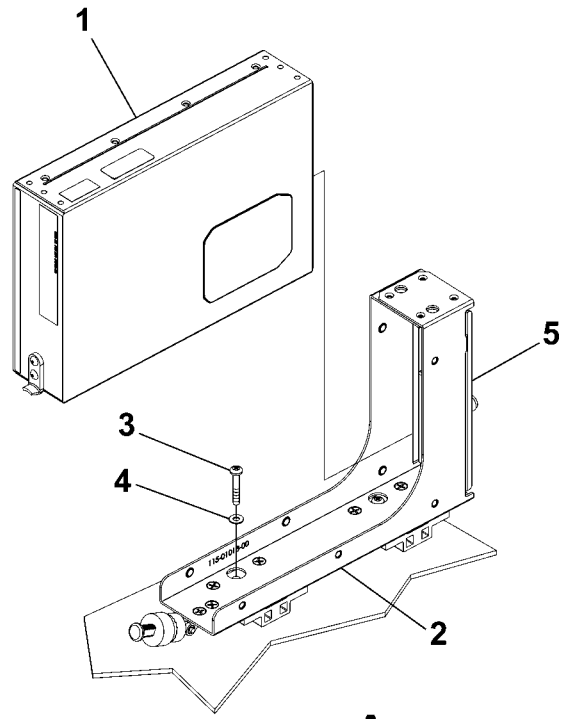
A108900



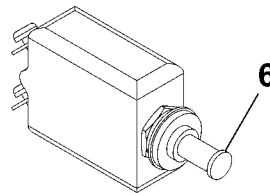
VIEW A-A



DETAIL B



DETAIL A



DETAIL C

GSR 56 INSTALLATION
FIGURE 01 (SHEET 1)

2610T7001
A-AA3940489
B3960245

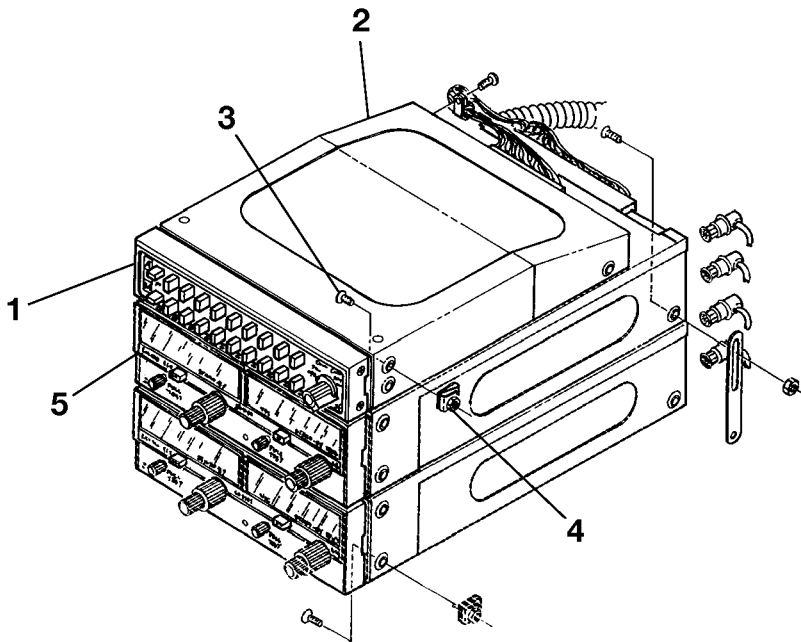
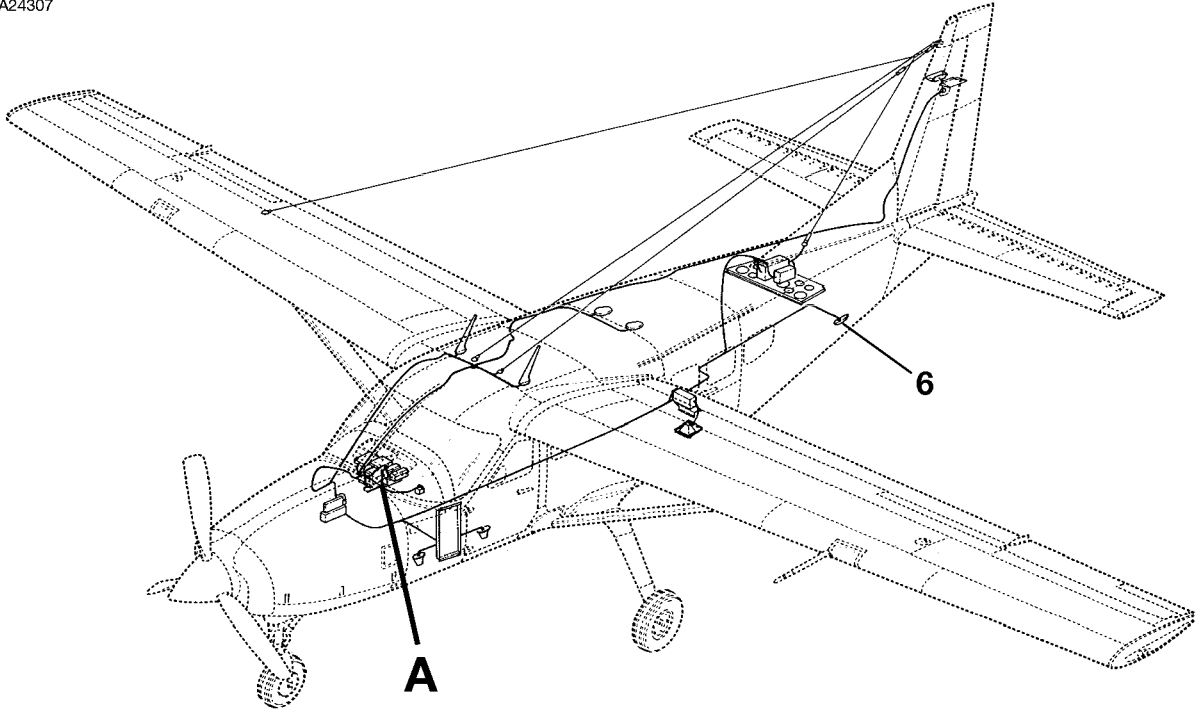
CESSNA®
MODEL 208
 ILLUSTRATED PARTS CATALOG

FIG ITEM	PART NUMBER	NOMENCLATURE							UNITS PER ASSY
		1	2	3	4	5	6	7	
01		GSR 56 INSTALLATION							
-								0651 & ON RF B5501 & ON	
1	011-02268-01	.	GSR 56	V0TRC3	01
2	115-01018-00	.	GSR 56 REMOTE RACK	V0TRC3	01
		.	ATTACHING PARTS		
3	MS35206-249	.	SCREW		04
4	NAS1149FN832P	.	WASHER		04
		.	* —		
5	011-01800-00	.	GSR 56 BACK PLATE	V0TRC3	01
6	S1232-505	.	CIRCUIT BREAKER HI048		01
7	CI401-490	.	IRIDIUM ANTENNA	V51351	01
		.	ATTACHING PARTS		
8	MS27039-0816	.	SCREW		04
		.	* —		
9	3960245-5	.	DOUBLER ASSY		01
10	MS21075L08N	.	NUTPLATE		04

- ITEM NOT ILLUSTRATED

CESSNA®
MODEL 208
ILLUSTRATED PARTS CATALOG

A24307



DETAIL A

26183001
A26141002

KING AUDIO/INTERCOM/MARKER BEACON PANEL INSTALLATION - TYPE KMA24
FIGURE 01 (SHEET 1)

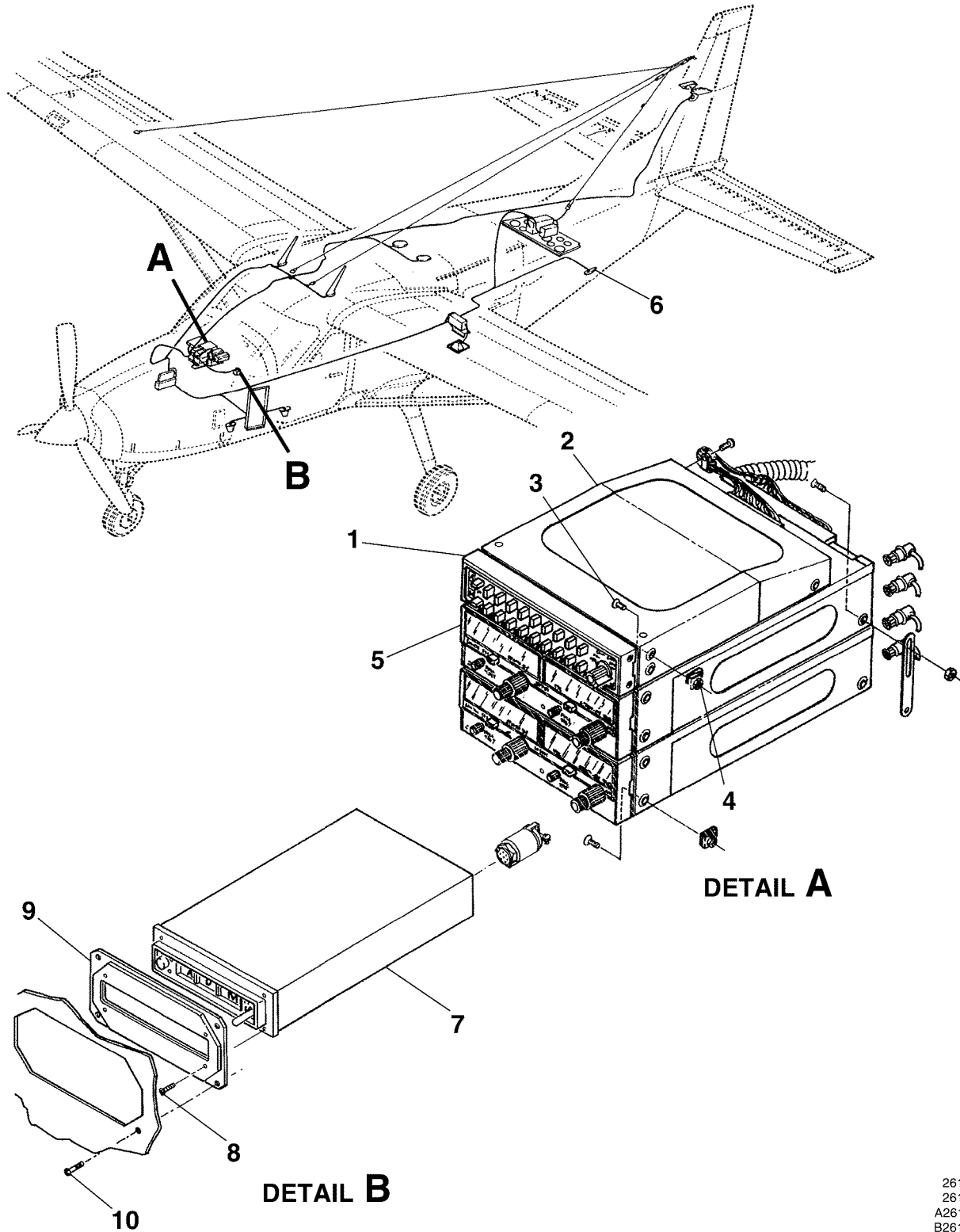
CESSNA®
MODEL 208
 ILLUSTRATED PARTS CATALOG

FIG ITEM	PART NUMBER	NOMENCLATURE							UNITS PER ASSY		
		1	2	3	4	5	6	7			
01		KING AUDIO/INTERCOM/MARKER BEACON PANEL INSTALLATION - TYPE							0001	& ON	RF R
-		KMA24 REFER TO NOTE 1							B0180	& ON	
1	066-01055-0000	. AUDIO CONTROL PANEL USED WITH DUAL NAV/COMS, DME, MKR, HF SCVR, DUAL ADF'S W/INT PH							V22373		AR
2	066-01055-0002	. AUDIO CONTROL PANEL USED WITH DUAL NAV/COMS, DME, MKR, ADF, H XCVR, AUTO SW AND W/INT PH							V22373		AR
3	066-01055-0003	. AUDIO CONTROL PANEL USED WITH DUAL NAV/COMS, DME, MKR, ADF, TEL. AUTO SW AND W/INT PH							V22373		AR
4	047-4940-04	. MOUNTING TRAY ATTACHING PARTS									01
5	MS24683BB26	. SCREW									04
6	S1477-06	. NUT —*									04
- 7		. KING NAV/COM INSTALLATION REFER TO 34-50-00 FIGURE 05									RF
- 8		. MARKER BEACON ANTENNA INSTALLATION REFER TO 34-30-01 FIGURE 01									RF

NOTE 1—REFER TO KING INSTALLATION KIT 050-1780-00 FOR ITEMS NOT LISTED.

CESSNA®
MODEL 208
 ILLUSTRATED PARTS CATALOG

A24308



26143001
 26107002
 A26141002
 B26181060

KING AUDIO/INTERCOM WITH KR-21 MARKER BEACON INSTALLATION - (TYPES KMA24H-70 AUDIO
 PANEL AND KR-21 MARKER BEACON)
 FIGURE 02 (SHEET 1)

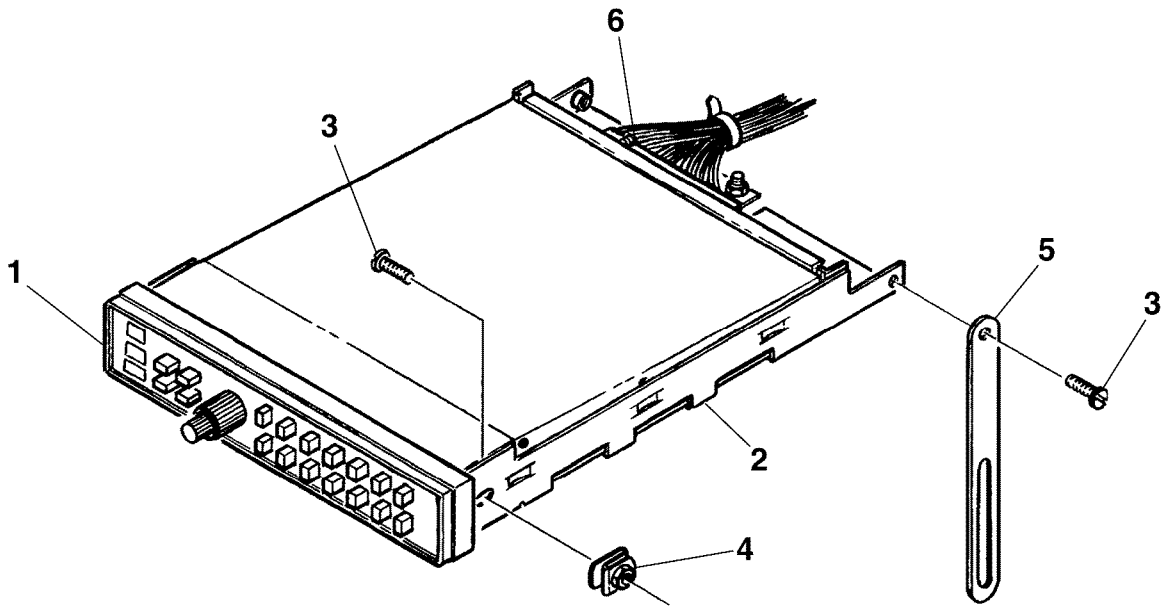
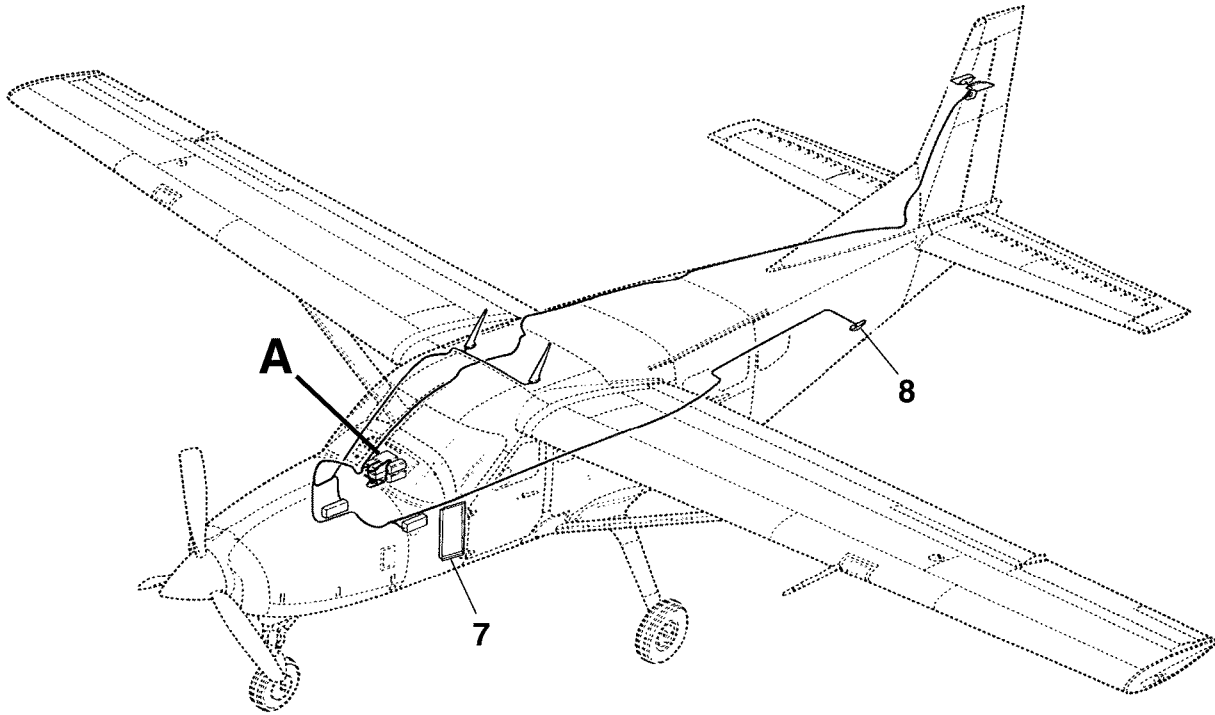
CESSNA®
MODEL 208
ILLUSTRATED PARTS CATALOG

FIG ITEM	PART NUMBER	NOMENCLATURE	UNITS PER ASSY	
			1 2 3 4 5 6 7	
02		KING AUDIO/INTERCOM WITH KR-21 MARKER BEACON INSTALLATION -	0146	& ON RF R
-		(TYPES KMA24H-70 AUDIO PANEL AND KR-21 MARKER BEACON)	B0180	& ON
1	066-1055-70	. AUDIO CONTROL PANEL USED WITH 3 XMTRS, 2 NAV'S, DME, MKR, V22373 DUAL ADF'S, INTERCOM, EMG SEL AND SPKR/AUTO SW REFER TO NOTE 1.		01
2	047-6284-04	. MOUNTING TRAY V22373 ATTACHING PARTS		01
3	MS24693BB26	. SCREW		04
4	S1477-06	. NUT —*—		04
5		. KING NAV/COM INSTALLATION REFER TO 34-50-00 FIGURE 05.		RF
6		. MARKER BEACON ANTENNA INSTALLATION REFER TO 34-30-01 FIGURE V22373 01		RF
7	066-01021-0001	. MARKER BEACON RECEIVER TYPE KR-21 V22373 ATTACHING PARTS		01
8	089-6163-05	. SCREW V22373 —*—		04
9	2601404-4	. ADAPTER PLATE ASSY ATTACHING PARTS		01
10	MS35214-14	. SCREW —*—		04

NOTE 1—WHEN REPLACING AUDIO CONTROL PANEL ON AIRPLANES 20800237 AND ON AND 208B0395 AND ON EQUIPPED WITH PUBLIC ADDRESS SYSTEM, AUDIO PANEL MUST BE MODIFIED PER BENDIX/KING SERVICE BULLETIN KMA24H-8 AND REIDENTIFY THE UNIT AS MOD8.

CESSNA®
MODEL 208
ILLUSTRATED PARTS CATALOG

A24306



DETAIL A

26183007
A26181213

SPERRY AUDIO/INTERCOM/MARKER BEACON PANEL INSTALLATION
FIGURE 03 (SHEET 1)

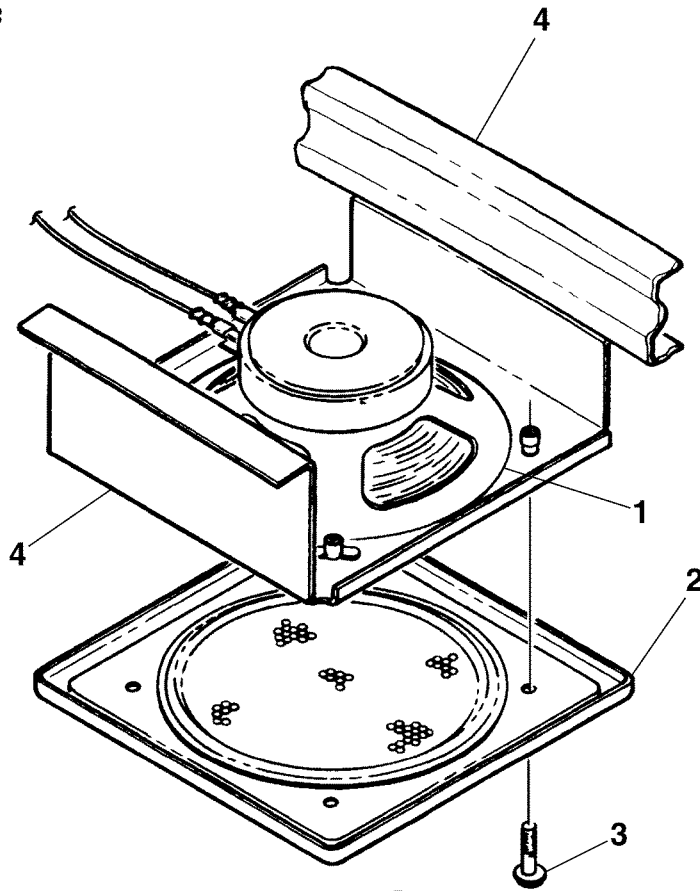
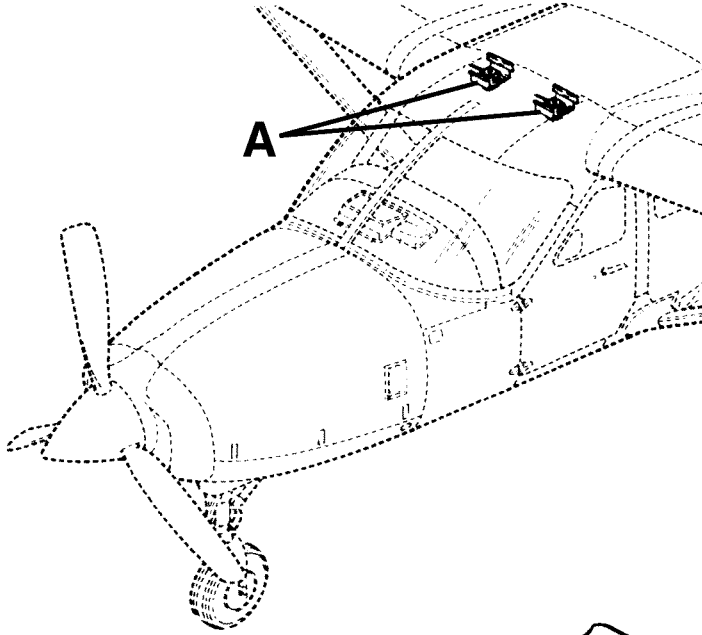
CESSNA®
MODEL 208
 ILLUSTRATED PARTS CATALOG

FIG ITEM	PART NUMBER	NOMENCLATURE							UNITS PER ASSY		
		1	2	3	4	5	6	7			
03		SPERRY AUDIO/INTERCOM/MARKER BEACON PANEL INSTALLATION							0001	0145	RF
-		. AUDIO CONTROL PANEL (TYPE SMA 90) W/MARKER BEACON USED							V86887		01
1	51770-2000	. W/DUAL NAV/COM									
2	52215-0000	. MOUNTING ASSY									01
		. ATTACHING PARTS									
3	52329-6-6	. SCREW									04
4	S1477-06	. NUT									02
5	1270078-1	. SUPPORT STRAP									02
		. *									
6	50712-2000	. CONNECTOR KIT							V86887		01 R
7		. AVIONICS CIRCUIT BREAKER PANEL INSTALLATION REFER TO 24-52-03									RF
		. FIGURE 01									
8		. MARKER BEACON ANTENNA INSTALLATION REFER TO 34-30-01 FIGURE									RF
		. 01									

- ITEM NOT ILLUSTRATED

CESSNA®
MODEL 208
ILLUSTRATED PARTS CATALOG

A24309



DETAIL A

SPEAKER INSTALLATION
FIGURE 01 (SHEET 1)

26181205
A26181203

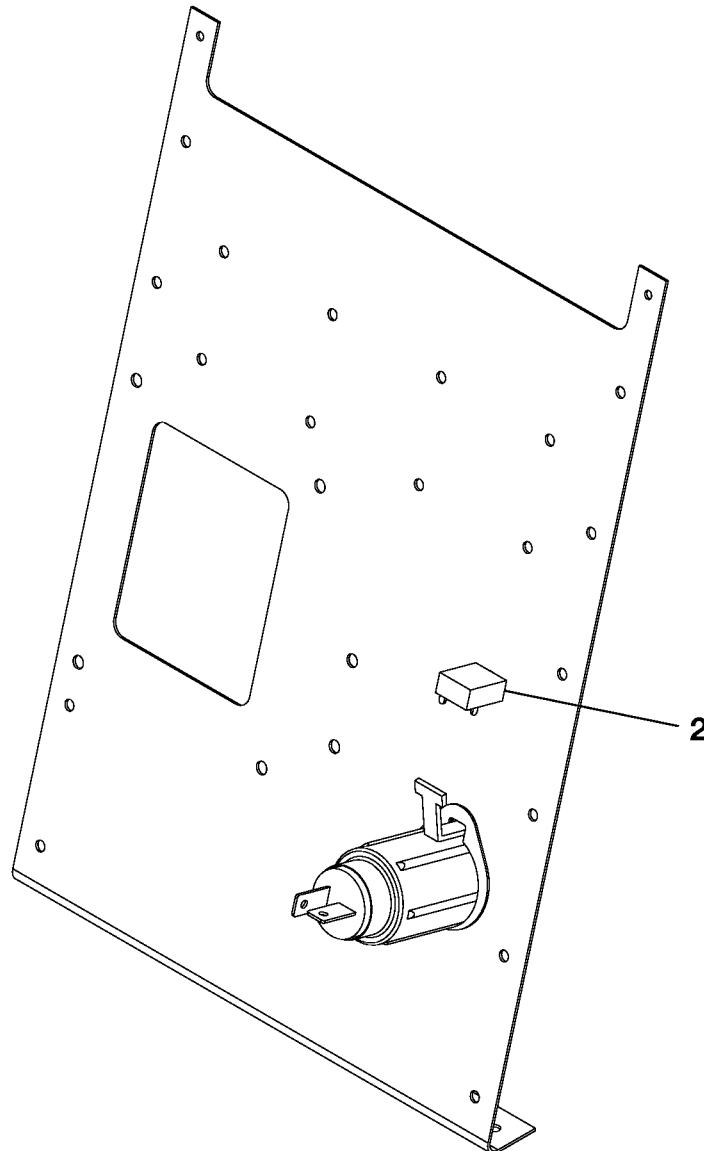
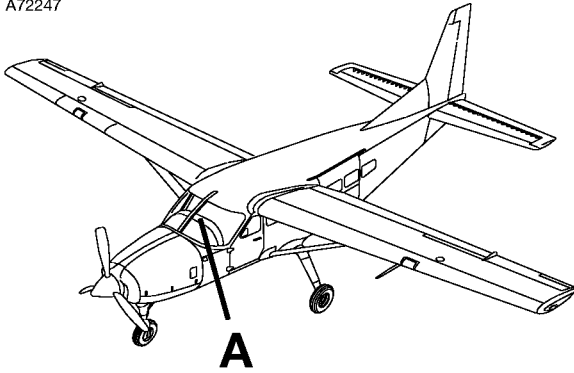
CESSNA®
MODEL 208
 ILLUSTRATED PARTS CATALOG

FIG ITEM	PART NUMBER	NOMENCLATURE	UNITS PER ASSY
	1 2 3 4 5 6 7		
01		SPEAKER INSTALLATION	
-			RF R
1	C596504-0102	. SPEAKER	02 R
2	2613369-3	. COVER ASSY ATTACHING PARTS	02 R
3	AN525-10R12	. SCREW	04 R
4		. FUSELAGE STRUCTURE REFER TO 53-10-01 FIGURE 01	RF R

- ITEM NOT ILLUSTRATED

CESSNA®
MODEL 208
ILLUSTRATED PARTS CATALOG

A72247



DETAIL A

WIRING BUNDLE ASSEMBLIES - CABIN AUDIO
FIGURE 02 (SHEET 1)

2610T7002
A2614T1415

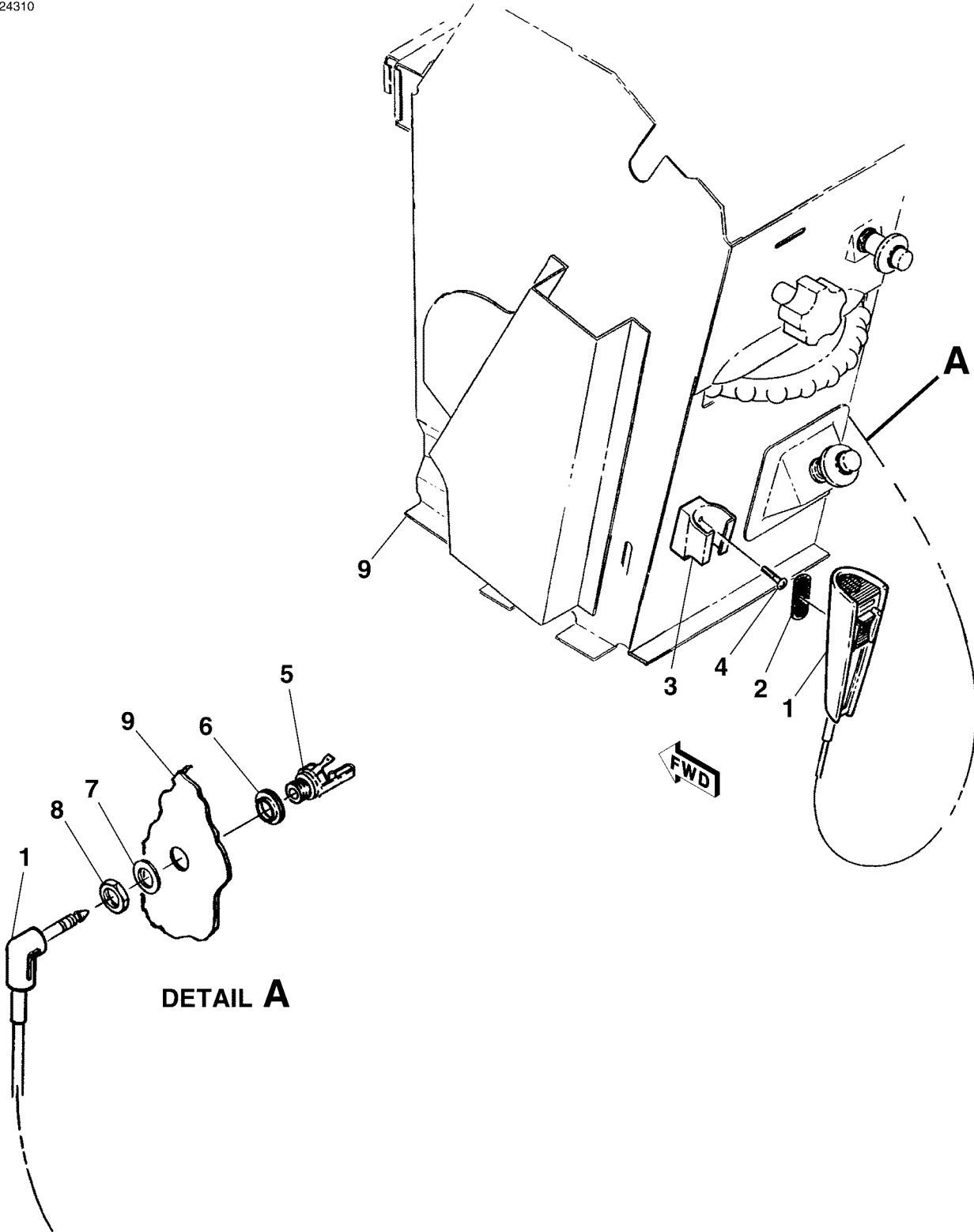
CESSNA®
MODEL 208
 ILLUSTRATED PARTS CATALOG

FIG ITEM	PART NUMBER	NOMENCLATURE	UNITS PER ASSY		
			1	2	3
02					
-		WIRING BUNDLE ASSEMBLIES - CABIN AUDIO			
			0500	& ON	RF
			B2000	& ON	
- 1	3970173-1 AUXILIARY AUDIO JACK INSTALLATION			01
- 2	3921312-4 WIRING BUNDLE ASSY-ENTERTAINMENT JACK ADAPTER			01
- 3	3921312-1 WIRING BUNDLE ASSY-AUDIO MAIN ASSY.	0500	0523	01 R
			B2000	B2225	
- 3A	3921312-5 WIRING BUNDLE ASSY-AUDIO MAIN ASSY.	0524	0532	01 R
			B2226	B2289	
- 3B	3921312-6 WIRING BUNDLE ASSY-AUDIO MAIN ASSY.	0533	0650	01 R
			B2290	B5500	
- 3C	3921316-1 WIRING BUNDLE ASSY-AUDIO MAIN ASSY.	0651	& ON	01 R
			B5501	& ON	
- 4	205980-1 RETAINER ASSY FSO 5205980-1			NP
- 4A	5205980-1 SCREW RETAINER KIT			01
- 5	3921312-2 WIRING BUNDLE ASSY-AUDIO RH EXT	0500	0650	01 R
			B2000	B5500	
- 5A	3921316-2 WIRING BUNDLE ASSY-AUDIO RH EXT	0651	& ON	01 R
			B5501	& ON	
- 6	3921312-3 WIRING BUNDLE ASSY-CABIN SPEAKER ADAPTER			01
- 7	C596504-0102 SPEAKER FSO 100-9107-02			NP
- 7A	100-9107-02 SPEAKER-RADIO 8 OHM			01

- ITEM NOT ILLUSTRATED

CESSNA®
MODEL 208
ILLUSTRATED PARTS CATALOG

A24310



26182024
A26181212

MICROPHONE INSTALLATION - HANDHELD
FIGURE 01 (SHEET 1)

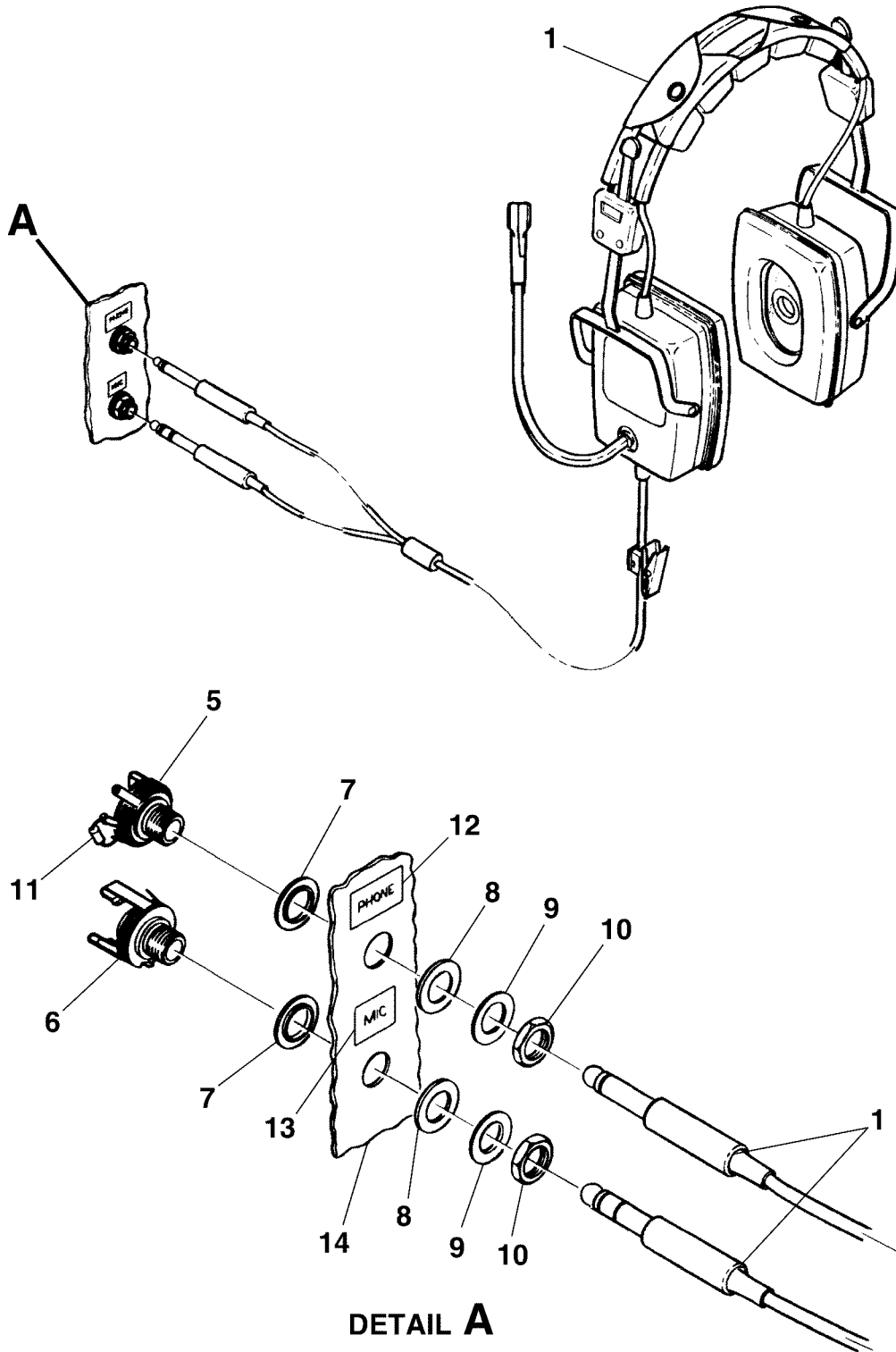
CESSNA®
MODEL 208
 ILLUSTRATED PARTS CATALOG

FIG ITEM	PART NUMBER	NOMENCLATURE	UNITS PER ASSY		
			1	2	3
01		MICROPHONE INSTALLATION - HANDHELD			
-			0001	& ON	RF
			B0180	& ON	
1	62800-00	. MICROPHONE FSO 62800-000	V28856		NP R
- 1A	62800-000	. MICROPHONE	V28856		01 R
2	2201136-2	. FASTENER-PILE BKI 1.85 IN LG			01
		ATTACHING PARTS			
3	62802-00	. BRACKET-MICROPHONE			01
4	MS35206-232	. SCREW			02
		—*—			
5	S1102-1X	. JACK-MICROPHONE	0001	0499	01
			B0180	B1999	
		ATTACHING PARTS			
6	S1196-2	. WASHER-INNER			01
7	S1196-1	. WASHER-OUTER			01
8		. NUT FURNISHED WITH JACK			RF
		—*—			
9		. PEDESTAL STRUCTURE REFER TO 53-22-00 FIGURE 01			RF

- ITEM NOT ILLUSTRATED

CESSNA®
MODEL 208
ILLUSTRATED PARTS CATALOG

A24311



26182020
A26181204

COMBINATION HEADSET AND MICROPHONE INSTALLATION
FIGURE 01 (SHEET 1)

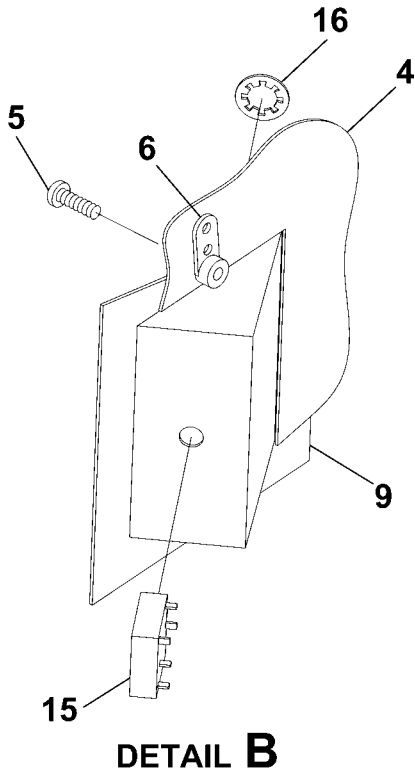
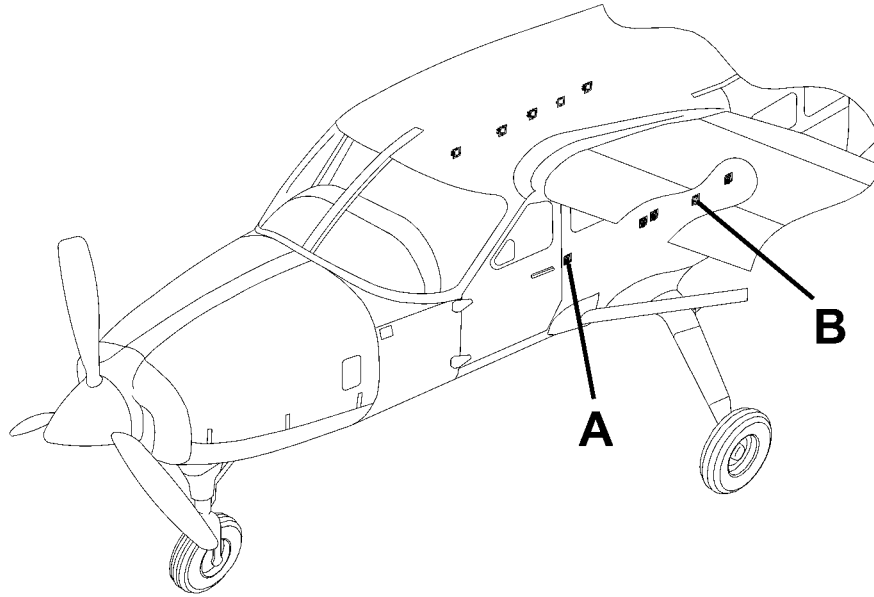
CESSNA®
MODEL 208
 ILLUSTRATED PARTS CATALOG

FIG ITEM	PART NUMBER	NOMENCLATURE	UNITS PER ASSY		
			1	2	3
01		COMBINATION HEADSET AND MICROPHONE INSTALLATION -REFER TO	0001	& ON	RF
-		NOTE 1	B0180	& ON	
1	C596531-0101	. HEADSET ASSY FSO 300048-200	0001	0237	01
			B0180	B0393	
- 2	300048-000	. HEADSET ASSY FSO 300048-200	0001	0237	01
			B0180	B0393	
- 3	300048-100	. HEADSET ASSY FSO 300048-200	0238	0259	01
			B0394	B0570	
- 4	300048-200	. HEADSET ASSY	0260	0572	01 R
			B0571	B5221	
5	S1102-3	. JACK-HEADPHONE	0001	0499	01
			B0001	B1999	
- 5A	S1102-3	. JACK-HEADPHONE	0500	& ON	01
			B2000	& ON	
6	S1612-1X	. JACK-MIC	0001	0499	01
			B0001	B1999	
- 6A	S1102-1X	. JACK-MIC	0500	& ON	01
			B2000	& ON	
7	S1196-2	. . WASHER-INSULATING-INNER			02
8	S1196-1	. . WASHER-INSULATING-OUTER			02
9		. . WASHER FURNISHED WITH JACK			RF
10		. . NUT FURNISHED WITH JACK			RF
11	S2000B561J	. RESISTOR ONLY REQUIRED WITH SPERRY RADIOS	0001	0122	01
12		. PLACARD-PHONE REFERTO 11-30-00 FIGURE 01			RF
13		. PLACARD-MIC REFERTO 11-30-00 FIGURE 01			RF
14		. INSTRUMENT PANEL REFER TO 53-22-01 FIGURE 01			RF

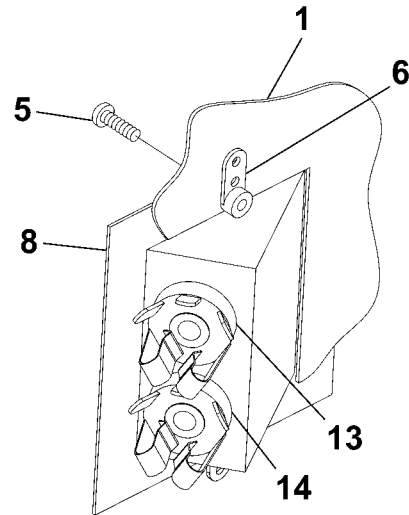
NOTE 1—THIS INSTALLATION IS TYPICAL FOR PILOT AND COPILOT. QUANTITIES PER AIRCRAFT ARE DOUBLE THE QUANTITIES SHOWN.

CESSNA®
MODEL 208
ILLUSTRATED PARTS CATALOG

A72237



DETAIL B



DETAIL A

JACK INSTALLATION - HEADPHONE AND MIC
FIGURE 02 (SHEET 1)

2610T7002
A2618T1434

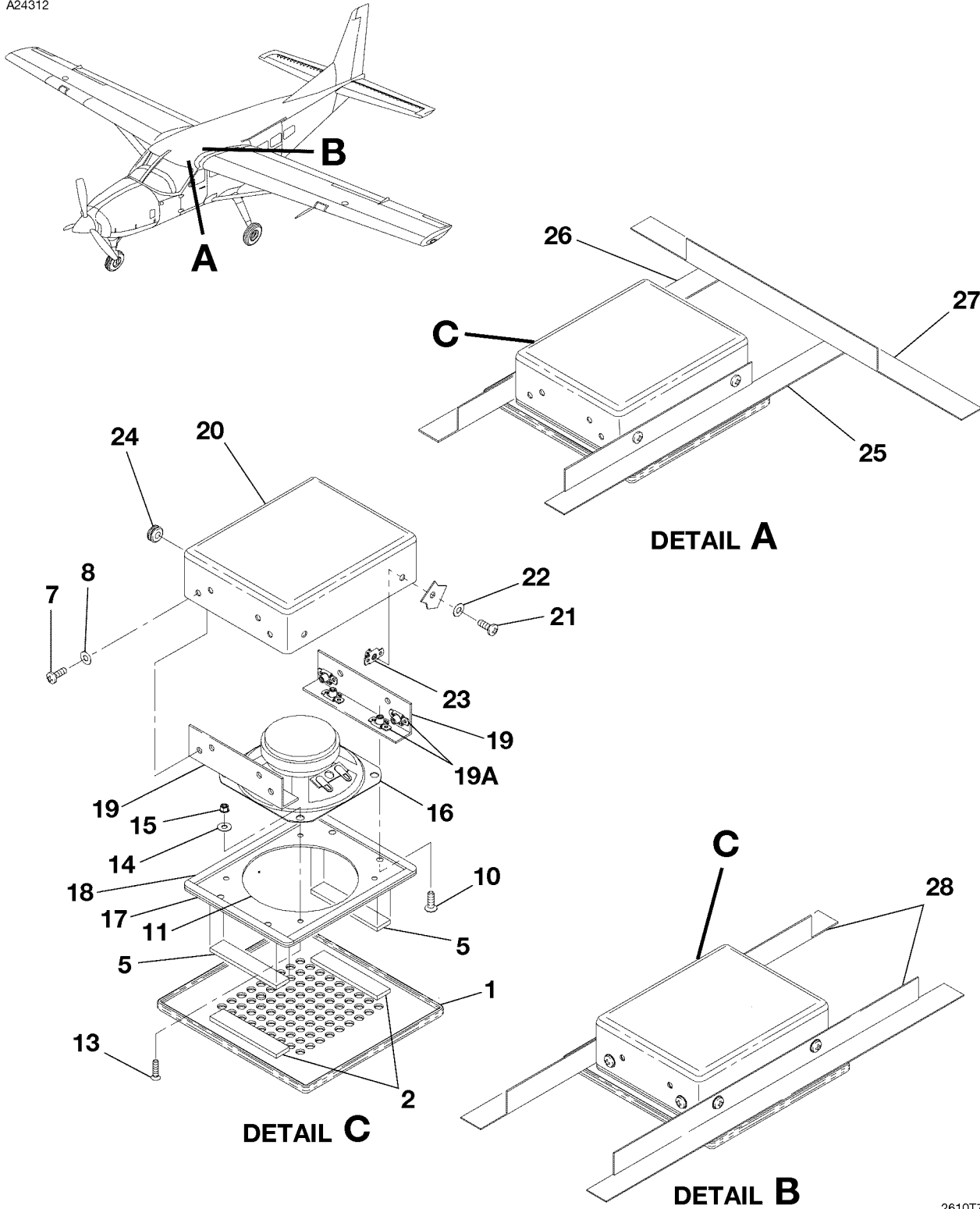
CESSNA®
MODEL 208
ILLUSTRATED PARTS CATALOG

FIG ITEM	PART NUMBER	NOMENCLATURE	UNITS PER ASSY		
			1	2	3
02		JACK INSTALLATION - HEADPHONE AND MIC	0500	& ON	RF
-			B2000	& ON	
1	2670174-5	. PANEL ASSY-LH AND RH REFER TO NOTE 1	0500	0504	04
			B2000	B2062	
- 2	2670174-7	. PANEL ASSY-LH AND RH	0505	& ON	04
			B2063	& ON	
- 3	2670174-7	. PANEL ASSY-OPTIONAL 8 MIC & JACK PANEL	B5527	& ON	04 R
4		. PANEL ASSY-REFER TO 25-23-02 FIGURE 01			RF R
		ATTACHING PARTS			
5	MS51957-31	. SCREW			02 R
6	MS21071L06	. NUTPLATE			02 R
		—*—			
- 7	2670178-1	. . ESCUTCHEON-HEADPHONE & MIC JACK	0500	0504	01 R
			B2000	B2062	
8	2670178-2	. . ESCUTCHEON-HEADPHONE & MIC JACK	0505	& ON	01 R
			B2063	& ON	
9	2670178-3	. . ESCUTCHEON-AUXILIARY INPUT JACK	0583	& ON	01 R
- 10	3921314-1	. . W/A-INTERCOM MAIN ASSY			01 R
- 11	3921314-2	. . W/A-AFT RH INTERCOM ADAPTER			01 R
- 12	3921314-3	. . W/A-AFT AUXILIARY JACK ASSY			01 R
13	S1102-1X	. . . JACK-MIC			01 R
14	S1102-3	. . . JACK-HEADPHONE			01 R
15	35RAPC4BH3	. . . JACK-AUXILIARY INPUT			01 R
16	MS35333-40	. . . LOCK WASHER-FLAT			01 R
- 17		. . . PLACARDS-MIC AND AUXILIARY-REFER TO 11-N-31 FIGURE 01			RF R

NOTE 1—PERMISSIBLE TO INSTALL -5 PANEL ASSYS INTO -3 AND -4 USING (2) MS21042L06 NUTS FOR AIRCRAFT WITHOUT MS21071L06 NUTPLATES INSTALLED ON -B2000 AND -B2001

CESSNA®
MODEL 208
 ILLUSTRATED PARTS CATALOG

A24312



PUBLIC ADDRESS SPEAKER INSTALLATION - 208
 FIGURE 01 (SHEET 1)

2610T7002
 A2618T1097
 B2618T1099
 C2618T1100

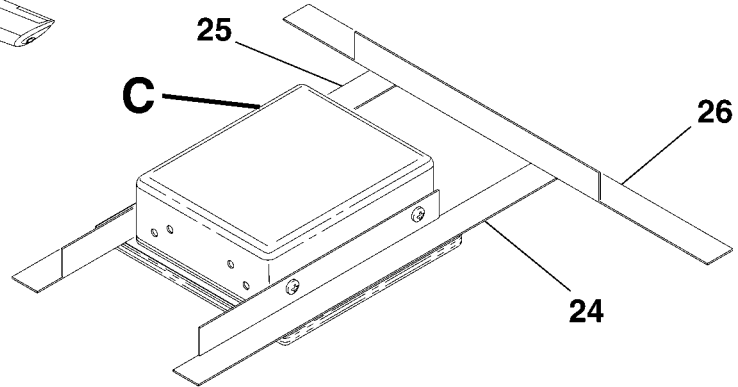
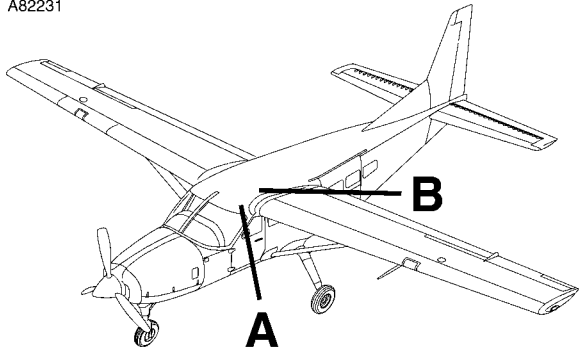
CESSNA®
MODEL 208
 ILLUSTRATED PARTS CATALOG

FIG ITEM	PART NUMBER	NOMENCLATURE	UNITS PER ASSY		
			1 2 3 4 5 6 7		
01		PUBLIC ADDRESS SPEAKER INSTALLATION - 208	0237	0499	RF R
-					
1	2615168-25 SPEAKER GRILL ASSY			02
2	2615168-27 FASTENER-PILE			02 R
- 3	2615168-3 P A SPEAKER ASSY			01 R
- 4	2615168-4 P A SPEAKER ASSY			01 R
5	2615168-26 FASTENER-HOOK			02 R
- 6	2615168-21 SPEAKER BOX ASSY			01 R
		ATTACHING PARTS			
7	MS27039-0807 SCREW			02 R
8	NAS1149FN816P WASHER			02 R
		—*—			
- 9	4919359-8 FASCIA ASSY			01 R
		ATTACHING PARTS			
10	MS24694-S5 SCREW			04 R
		—*—			
11	4919359-2 FASCIA			01 R
- 12	4919359-11 SPEAKER ASSY			01 R
		ATTACHING PARTS			
13	MS24693-S28 SCREW			04 R
14	NAS1149FN616P WASHER			04 R
15	MS21042L06 NUT			04 R
		—*—			
16	DC32S SPEAKER V14208			01 R
17	4919359-9 SEAL			02 R
18	4919359-10 SEAL			02 R
19	4919359-6 BRACKET ASSY			02 R
19A	MS21075-08E NUTPLATE			04 R
20	2615168-17 SPEAKER HOUSING ASSY			01 R
		ATTACHING PARTS			
21	MS27039-0807 SCREW			04 R
22	NAS1149FN816P WASHER			04 R
		—*—			
23	MS21075-08E NUTPLATE			04 R
24	MS35489-4 GROMMET			01 R
25	2615168-9 BRACKET-LH			01 R
26	2615168-10 BRACKET-RH			01 R
27	2615168-13 BRACKET			01 R
28	2615168-12 BRACKET			02 R

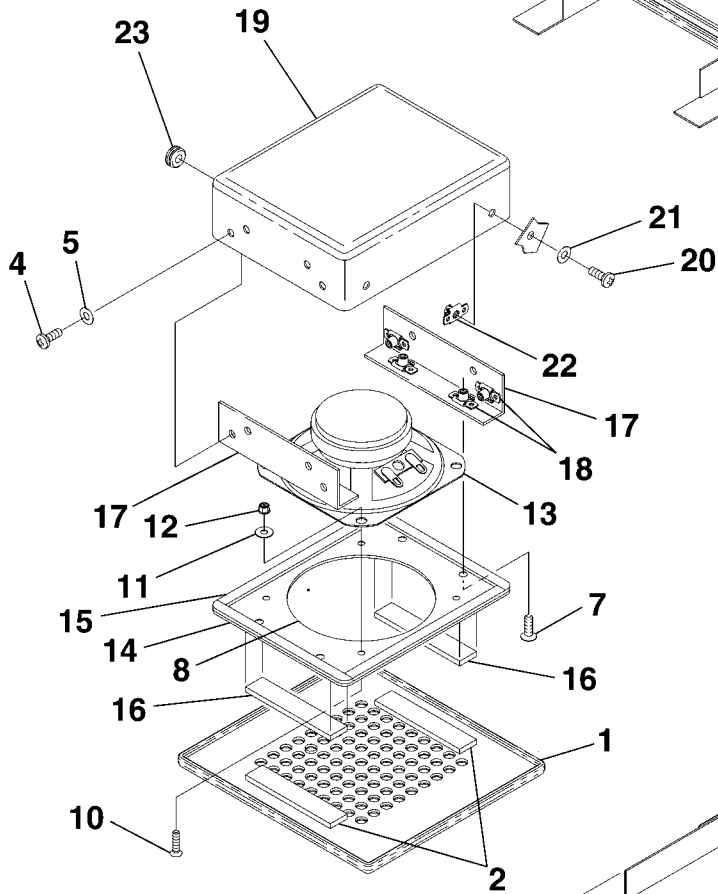
- ITEM NOT ILLUSTRATED

CESSNA®
MODEL 208
ILLUSTRATED PARTS CATALOG

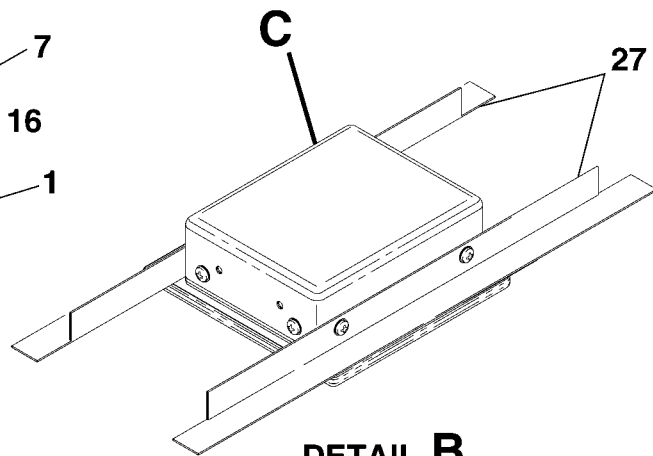
A82231



DETAIL A



DETAIL C



DETAIL B

2610T7002
A2618T1097
B2618T1099
C2618T1100

PUBLIC ADDRESS SPEAKER INSTALLATION - 208
FIGURE 01A (SHEET 1)

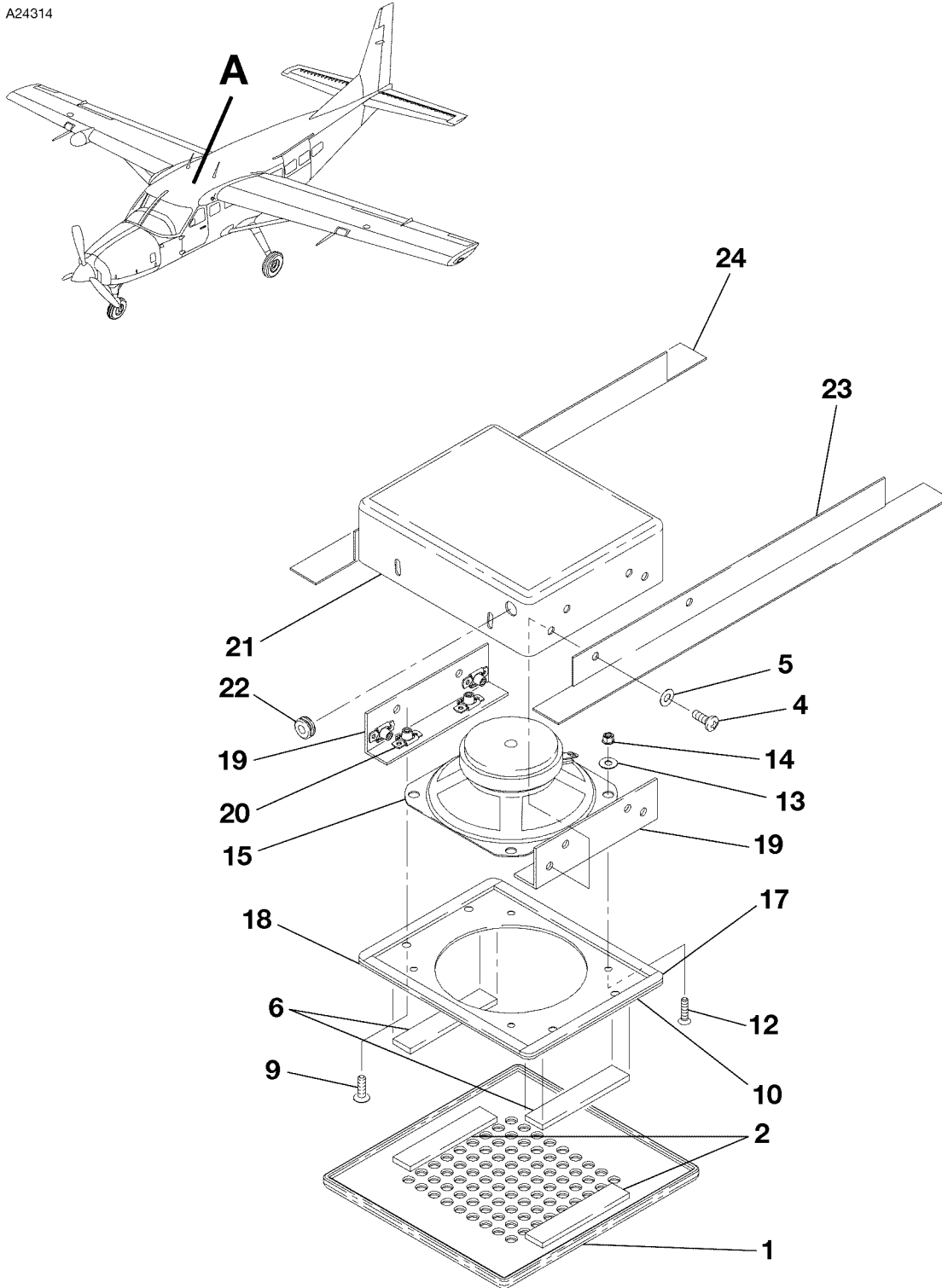
CESSNA®
MODEL 208
 ILLUSTRATED PARTS CATALOG

FIG ITEM	PART NUMBER	NOMENCLATURE	UNITS PER ASSY	
			1 2 3 4 5 6 7	
01A		PUBLIC ADDRESS SPEAKER INSTALLATION - 208	0500	& ON RF
-				
1	2615168-25 SPEAKER GRILL ASSY		02
2	2615168-27 FASTENER-PILE		04
- 3	2615187-3 SPEAKER BOX ASSY	0500	0651 02 R
- 3A	2615187-9 SPEAKER BOX ASSY	0652	& ON 02 R
		ATTACHING PARTS		
4	MS27039-0807 SCREW		04
5	NAS1149FN816P WASHER		04
		—*—		
- 6	2615187-6 FASCIA ASSY		01
		ATTACHING PARTS		
7	MS24694-S5 SCREW		04
		—*—		
8	4919359-2 FASCIA		01
- 9	3921308-3 W/A-SPEAKER ADAPTER		01
		ATTACHING PARTS		
10	MS24693-S28 SCREW		04
11	NAS1149FN616P WASHER		04
12	MS21042L06 NUT		04
		—*—		
13	DC32S SPEAKER V14208		02
14	4919359-9 SEAL		04
15	4919359-10 SEAL		04
16	2615168-26 FASTENER-HOOK		02
17	4919359-6 BRACKET ASSY	0500	0651 02 R
- 17A	4919359-12 BRACKET ASSY	0652	& ON 02 R
18	MS21075-08E NUTPLATE		04 R
19	2615168-17 SPEAKER HOUSING ASSY		01
		ATTACHING PARTS		
20	MS27039-0807 SCREW		04
21	NAS1149FN816P WASHER		04
		—*—		
22	MS21075-08E NUTPLATE		04
23	MS35489-4 GROMMET		01
24	2615168-9 BRACKET-LH		01
25	2615168-10 BRACKET-RH		01
26	2615168-13 BRACKET		01
27	2615168-12 BRACKET		02

- ITEM NOT ILLUSTRATED

CESSNA®
MODEL 208
ILLUSTRATED PARTS CATALOG

A24314



DETAIL A

PUBLIC ADDRESS SPEAKER INSTALLATION - 208B
FIGURE 01 (SHEET 1)

2610T7005
A2618T1098

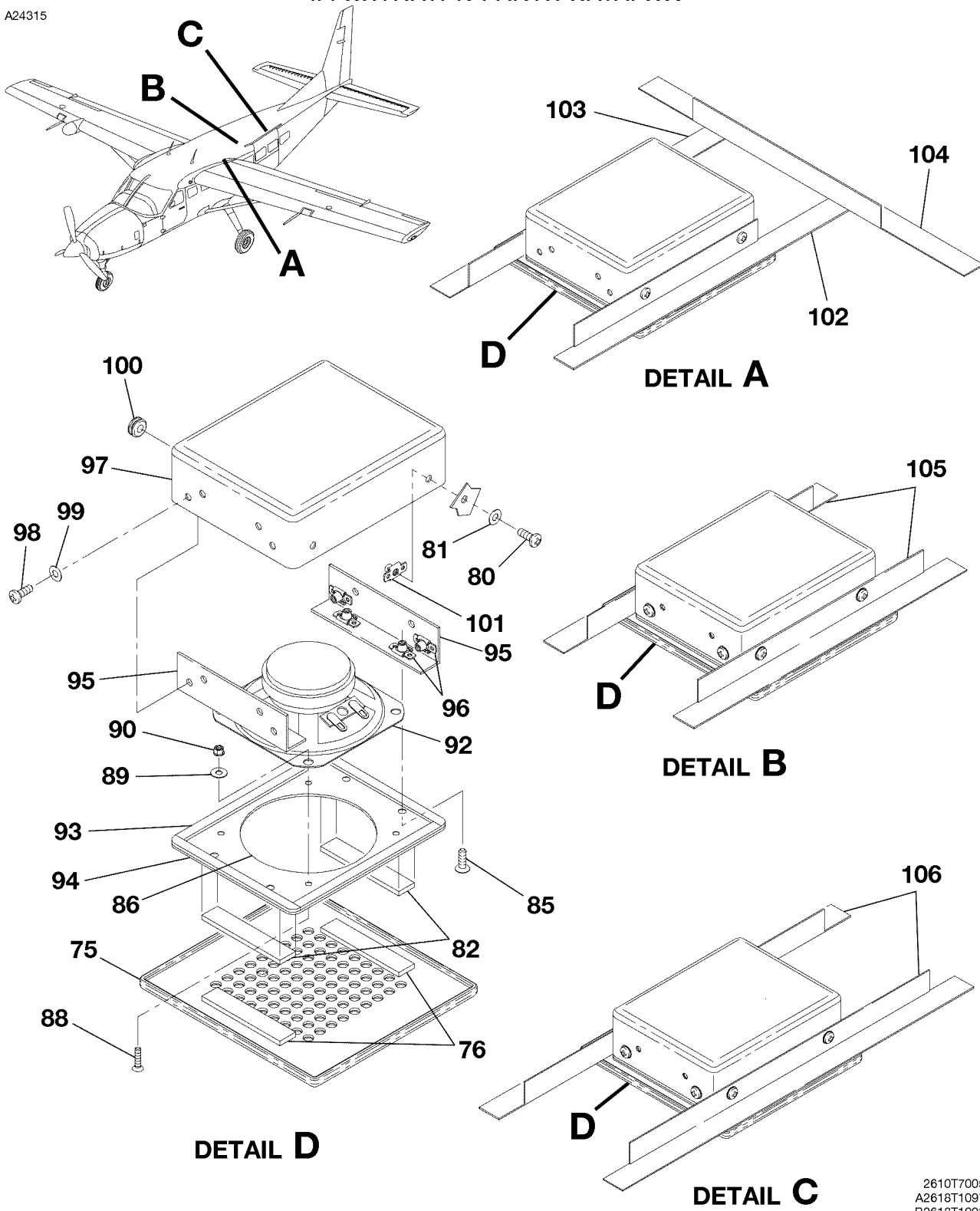
CESSNA®
MODEL 208
 ILLUSTRATED PARTS CATALOG

FIG ITEM	PART NUMBER	NOMENCLATURE	UNITS		
			PER	ASSY	
01		PUBLIC ADDRESS SPEAKER INSTALLATION - 208B	B0393	B1999	RF R
-					
1	2615168-25 SPEAKER GRILL ASSY			01
2	2615168-27 FASTENER-PILE			02
- 3	2615168-5 P A SPEAKER ASSY			01 R
		ATTACHING PARTS			
4	MS27039-0807 SCREW			04 R
5	NAS1149FN816P WASHER			04 R
		*—			
6	2615168-26 FASTENER-HOOK			02 R
- 7	2615168-23 SPEAKER BOX ASSY			01 R
- 8	2615168-20 FASCIA ASSY			01 R
		ATTACHING PARTS			
9	MS24694-S5 SCREW			04 R
		*—			
10	4919359-2 FASCIA			01 R
- 11	2615168-18 SPEAKER ASSY-208B			01 R
		ATTACHING PARTS			
12	MS24693-S28 SCREW			04 R
13	NAS1149FN616P WASHER			04 R
14	MS21042L06 NUT			04 R
		*—			
15	DC32S4 SPEAKER-40HM	V14208		01 R
- 16	NAS1149FN832P WASHER			04 R
17	4919359-9 SEAL			02 R
18	4919359-10 SEAL			02 R
19	2615168-16 BRACKET ASSY			02 R
20	MS21075-08E NUTPLATE			04 R
21	2615168-19 SPEAKER HOUSING ASSY			01 R
22	MS35489-4 GROMMET			01 R
23	2615168-15 BRACKET-LH			01 R
24	2615168-14 BRACKET-RH			01 R
- 25	2615168-28 BRACKET			01 R

- ITEM NOT ILLUSTRATED

CESSNA®
MODEL 208
 ILLUSTRATED PARTS CATALOG

A24315



DETAIL D

DETAIL A

DETAIL B

DETAIL C

2610T7005
 A2618T1097
 B2618T1098
 C2618T1099
 D2618T1100

PUBLIC ADDRESS SPEAKER INSTALLATION - 208B
 FIGURE 01 (SHEET 2)

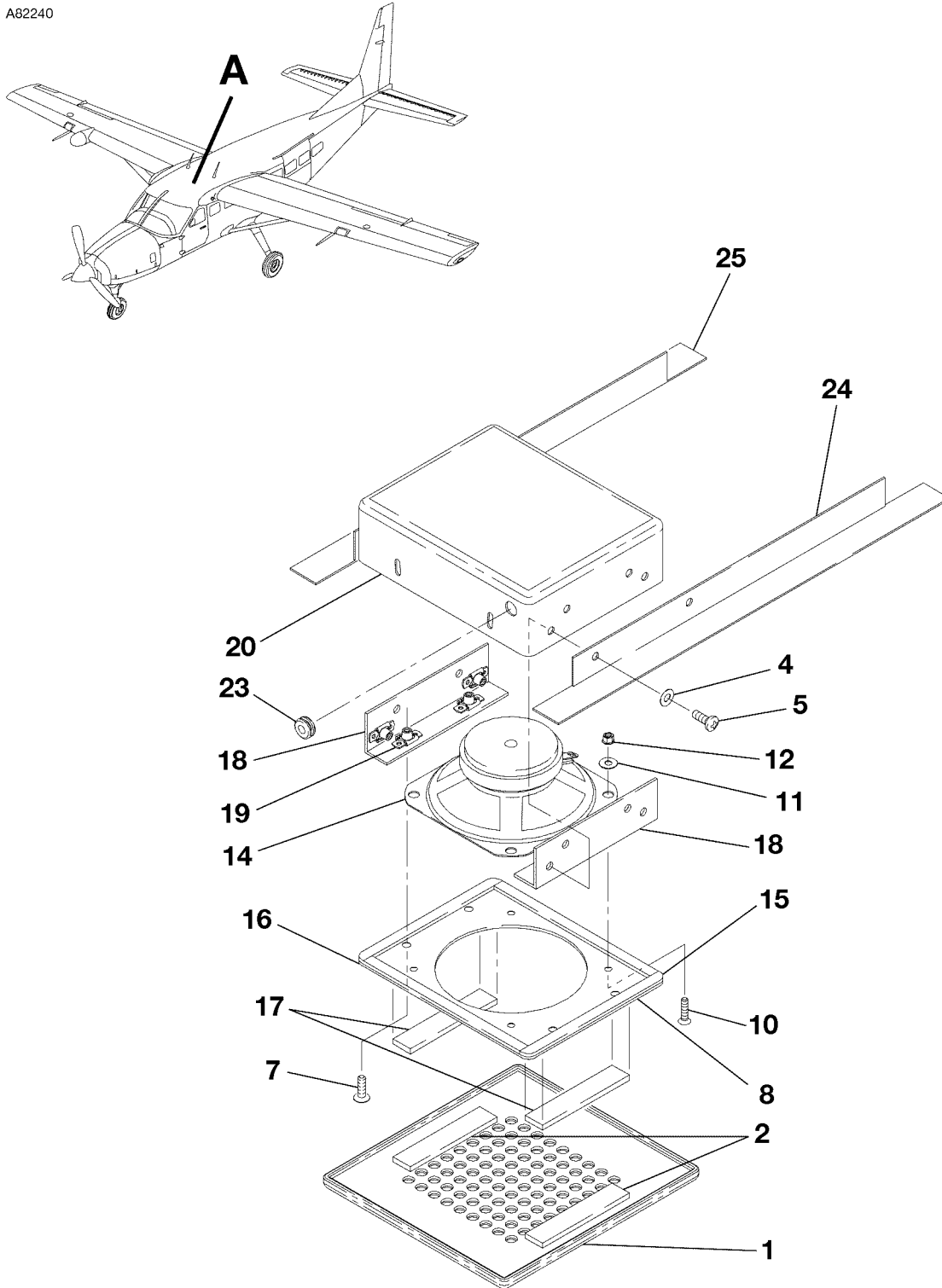
CESSNA®
MODEL 208
 ILLUSTRATED PARTS CATALOG

FIG ITEM	PART NUMBER	1 2 3 4 5 6 7	NOMENCLATURE	UNITS
				PER ASSY
01				
75	2615168-25	.	GRILL ASSY-SPEAKER	03
76	2615168-27	.	FABRIC FASTENER-PILE	02
- 77	2615168-6	.	P A SPEAKER ASSY	01 R
- 78	2615168-7	.	P A SPEAKER ASSY	01 R
- 79	2615168-8	.	P A SPEAKER ASSY	01 R
			ATTACHING PARTS	
80	MS27039-0807	.	SCREW	04 R
81	NAS1149FN816P	.	WASHER	04 R
			*—	
82	2615168-26	.	FASTENER-HOOK	02 R
- 83	2615168-22	.	SPEAKER BOX ASSY	01 R
- 84	2615168-20	.	FASCIA ASSY	01 R
			ATTACHING PARTS	
85	MS24694-S5	.	SCREW	04 R
			*—	
86	4919359-2	.	FASCIA	01 R
- 87	2615168-18	.	SPEAKER ASSY	01 R
			ATTACHING PARTS	
88	MS24693-S28	.	SCREW	04 R
89	NAS1149FN616P	.	WASHER	04 R
90	MS21042L06	.	NUT	04 R
- 91	NAS1149FN832P	.	WASHER	04 R
			*—	
92	DC32S4	.	SPEAKER-40HM V14208	01 R
93	4919359-9	.	SEAL	02 R
94	4919359-10	.	SEAL	02 R
95	4919359-6	.	BRACKET ASSY	02 R
96	MS21075-08E	.	NUTPLATE	04 R
97	2615168-17	.	SPEAKER HOUSING ASSY	01 R
			ATTACHING PARTS	
98	MS27039-0807	.	SCREW	04 R
99	NAS1149FN816P	.	WASHER	04 R
			*—	
100	MS35489-4	.	GROMMET	01 R
101	MS21075-08E	.	NUTPLATE	04 R
102	2615168-9	.	BRACKET-LH	01 R
103	2615168-10	.	BRACKET-RH	01 R
104	2615168-13	.	BRACKET	01 R
105	2615168-11	.	BRACKET	02 R
106	2615168-12	.	BRACKET	02 R

- ITEM NOT ILLUSTRATED

CESSNA®
MODEL 208
ILLUSTRATED PARTS CATALOG

A82240



DETAIL A

PUBLIC ADDRESS SPEAKER INSTALLATION - 208B
FIGURE 01A (SHEET 1)

2610T7005
A2618T1098

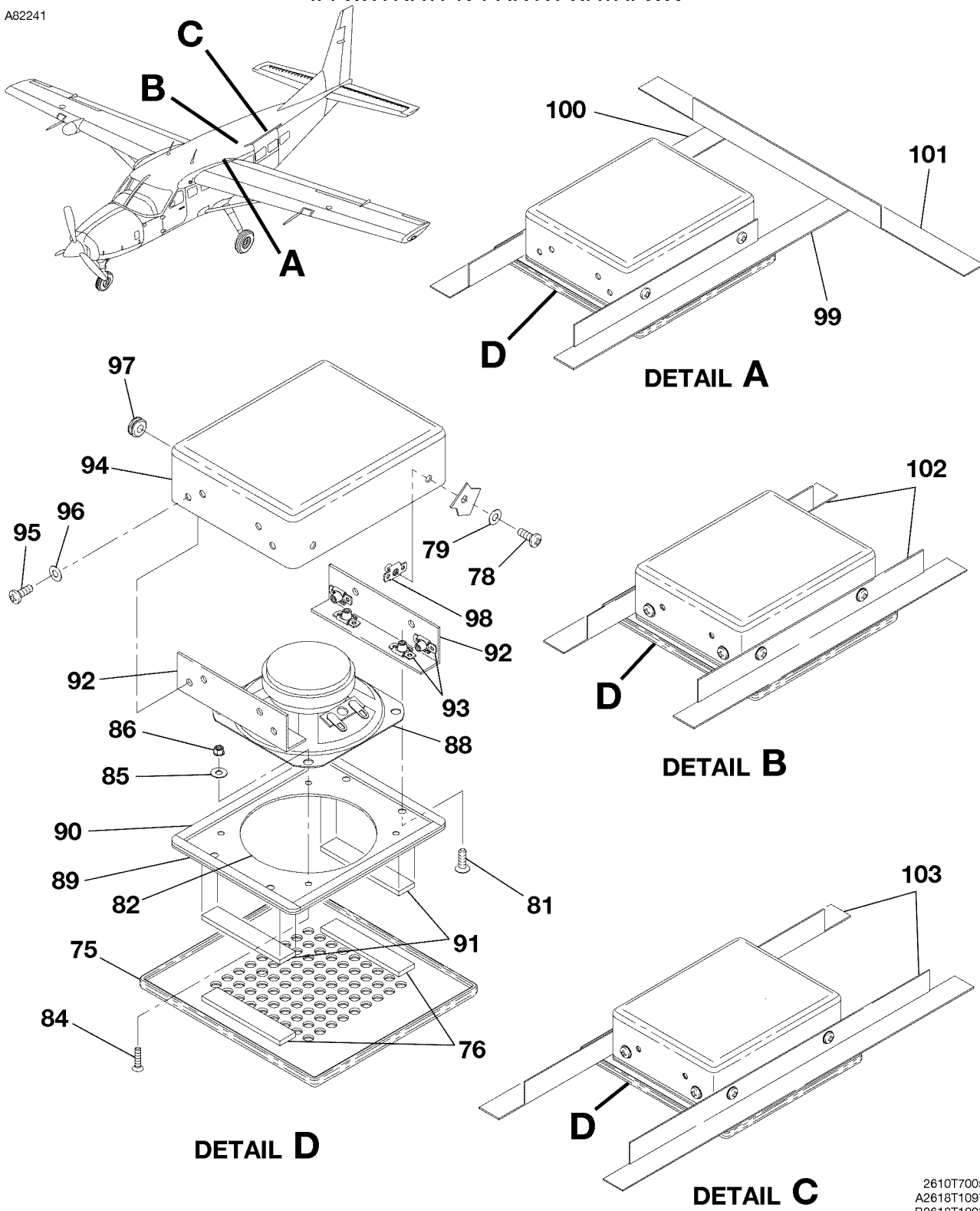
CESSNA®
MODEL 208
ILLUSTRATED PARTS CATALOG

FIG ITEM	PART NUMBER	NOMENCLATURE	UNITS PER ASSY		
			1	2	3
01A		PUBLIC ADDRESS SPEAKER INSTALLATION - 208B			
-			B2000	& ON	RF
1	2615168-25 SPEAKER GRILL ASSY			01
2	2615168-27 FASTENER-PILE			02
- 3	2615187-5 SPEAKER BOX ASSY	B2000	B5501	01 R
- 3A	2615187-12 SPEAKER BOX ASSY	B5502	& ON	01 R
		ATTACHING PARTS			
4	MS27039-0807 SCREW			04
5	NAS1149FN816P WASHER			04
		-			
- 6	2615187-7 FASCIA ASSY			01
		ATTACHING PARTS			
7	MS24694-S5 SCREW			04
		-			
8	4919359-2 FASCIA			01
- 9	3921313-2 W/A-SPEAKER ADAPTOR			01
		ATTACHING PARTS			
10	MS24693-S28 SCREW			04
11	NAS1149FN616P WASHER			04
12	MS21042L06 NUT			04
- 13	NAS1149FN832P WASHER			04
		-			
14	DC32S4 SPEAKER-40HM		V14208	01
15	4919359-9 SEAL			02
16	4919359-10 SEAL			02
17	2615168-26 FASTENER-HOOK			02
18	2615168-16 BRACKET ASSY	B2000	B5501	02 R
- 18A	2615168-29 BRACKET ASSY	B5502	& ON	02 R
19	MS21075-08E NUTPLATE			04
20	2615168-19 SPEAKER HOUSING ASSY			01
		ATTACHING PARTS			
- 21	MS27039-0807 SCREW			04
- 22	NAS1149FN816P WASHER			04
		-			
23	MS35489-4 GROMMET			01
24	2615168-15 BRACKET-LH			01
25	2615168-14 BRACKET-RH			01
- 26	2615168-28 BRACKET			01

- ITEM NOT ILLUSTRATED

CESSNA®
MODEL 208
 ILLUSTRATED PARTS CATALOG

A82241



PUBLIC ADDRESS SPEAKER INSTALLATION - 208B
 FIGURE 01A (SHEET 2)

2610T7005
 A2618T1097
 B2618T1098
 C2618T1099
 D2618T1100

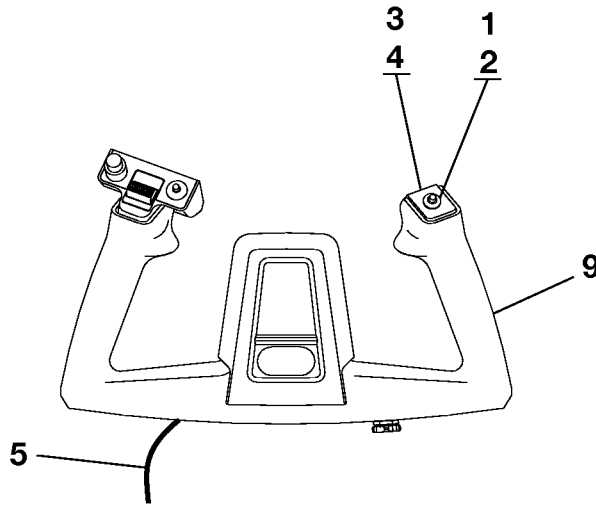
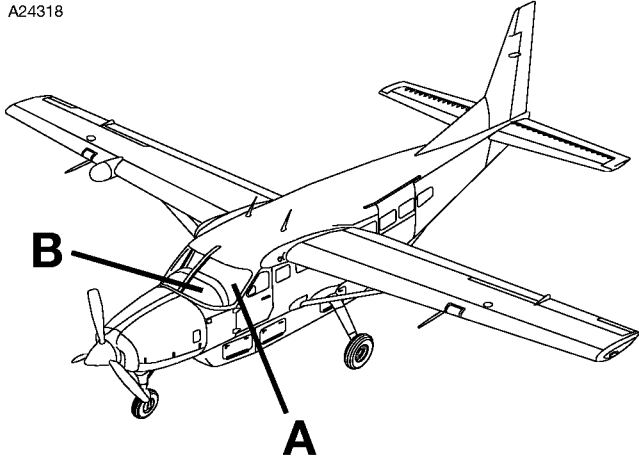
CESSNA®
MODEL 208
ILLUSTRATED PARTS CATALOG

FIG ITEM	PART NUMBER	1 2 3 4 5 6 7	NOMENCLATURE	UNITS	
				PER	ASSY
01A					
75	2615168-25	.	SPEAKER GRILL ASSY		01
76	2615168-27	.	FASTENER-PILE		02
- 77	2615187-4	.	SPEAKER BOX ASSY	B2000	B5501 03 R
- 77A	2615187-11	.	SPEAKER BOX ASSY	B5502	& ON 03 R
			ATTACHING PARTS		
78	MS27039-0807	.	SCREW		04
79	NAS1149FN816P	.	WASHER		04
			*—		
- 80	2615187-7	.	FASCIA ASSY		01
			ATTACHING PARTS		
81	MS24694-S5	.	SCREW		04
			*—		
82	4919359-2	.	FASCIA		01
- 83	3921313-2	.	W/A-SPEAKER ADAPTOR		01
			ATTACHING PARTS		
84	MS24693-S28	.	SCREW		04
85	NAS1149FN616P	.	WASHER		04
86	MS21042L06	.	NUT		04
- 87	NAS1149FN832P	.	WASHER		04
			*—		
88	DC32S4	.	SPEAKER-40HM	V14208	01
89	4919359-9	.	SEAL		02
90	4919359-10	.	SEAL		02
91	2615168-26	.	FASTENER-HOOK		02
92	4919359-6	.	BRACKET ASSY	B2000	B5501 02 R
- 92A	4919359-12	.	BRACKET ASSY	B5502	& ON 02 R
93	MS21075-08E	.	NUTPLATE		04
94	2615168-17	.	SPEAKER HOUSING ASSY		01
			ATTACHING PARTS		
95	MS27039-0807	.	SCREW		04
96	NAS1149FN816P	.	WASHER		04
			*—		
97	MS35489-4	.	GROMMET		01
98	MS21075-08E	.	NUTPLATE		04
99	2615168-9	.	BRACKET-LH		01
100	2615168-10	.	BRACKET-RH		01
101	2615168-13	.	BRACKET		01
102	2615168-11	.	BRACKET		02
103	2615168-12	.	BRACKET		02

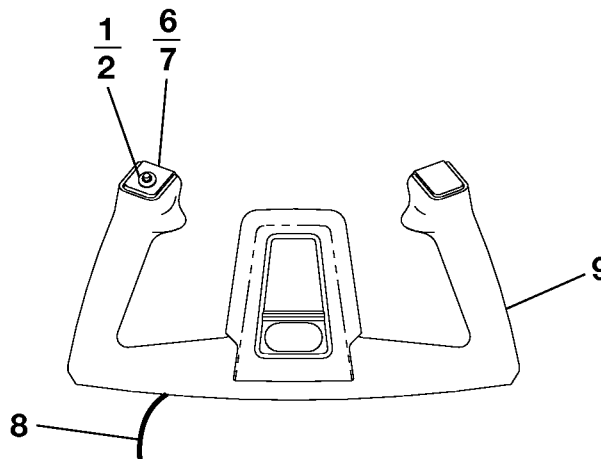
- ITEM NOT ILLUSTRATED

CESSNA®
MODEL 208
ILLUSTRATED PARTS CATALOG

A24318



DETAIL A



DETAIL B

MICROPHONE AND SWITCHES INSTALLATION - NAT AA97
FIGURE 01 (SHEET 1)

2610T7004
A2614T1274
B2614T1275

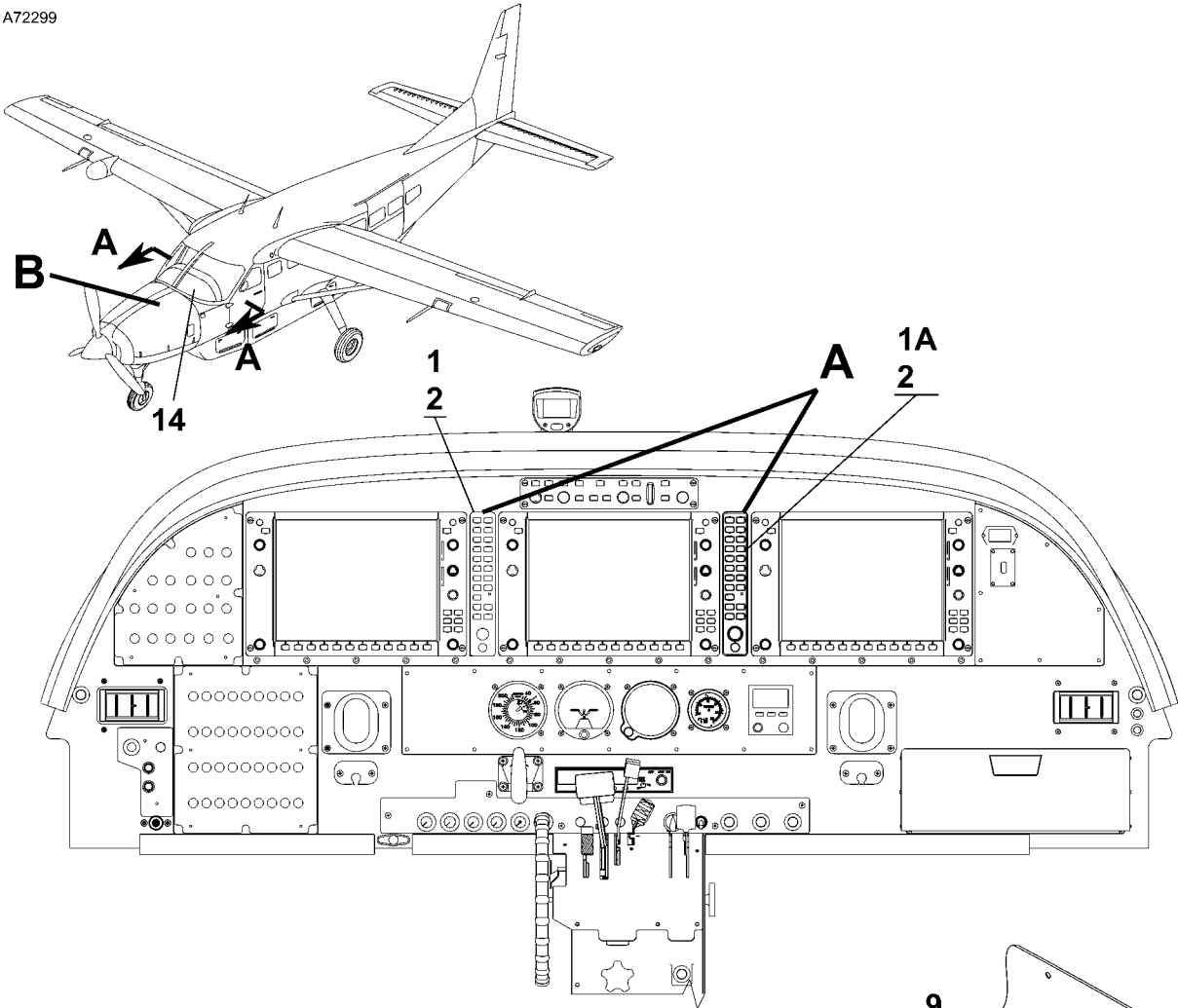
CESSNA®
MODEL 208
 ILLUSTRATED PARTS CATALOG

FIG ITEM	PART NUMBER	NOMENCLATURE	UNITS
			PER ASSY
		1 2 3 4 5 6 7	
01		MICROPHONE AND SWITCHES INSTALLATION - NAT AA97	RF R
-			
1	S2870-1	. SWITCH-AUDIO MIC-NAT AA97	02
2	S2870-2	. . NUT	02
3	1560024-26	. ESCUTCHEON-RH	01
4	NAS1352-02-8	. . SCREW	01
5	3929004-1	. CABLE ASSY REFER TO WIRING DIAGRAM MANUAL	01
6	1560024-25	. ESCUTCHEON-LH	01
7	NAS1352-04-8	. . SCREW	01
8	3921008-1	. CABLE ASSY REFER TO WIRING DIAGRAM MANUAL	01
9		. CONTROL WHEEL REFER TO 27-10-01 FIGURE 01	RF

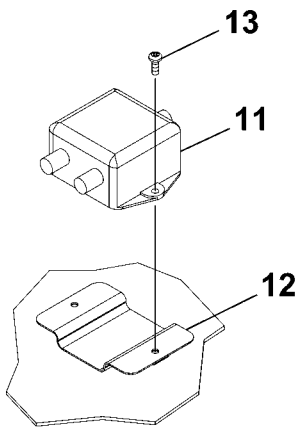
- ITEM NOT ILLUSTRATED

CESSNA®
MODEL 208
 ILLUSTRATED PARTS CATALOG

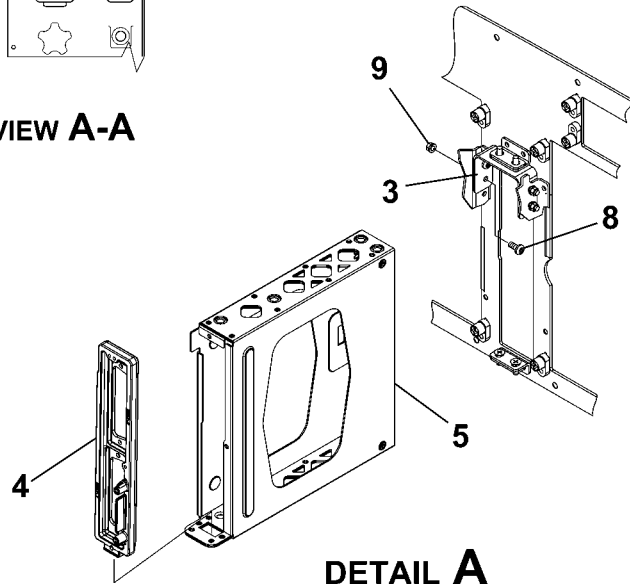
A72299



VIEW A-A



DETAIL B



DETAIL A

2610T7004
 A2614T1483
 B2614T1483
 AA2614T1483

AUDIO PANEL INSTALLATION
FIGURE 01 (SHEET 1)

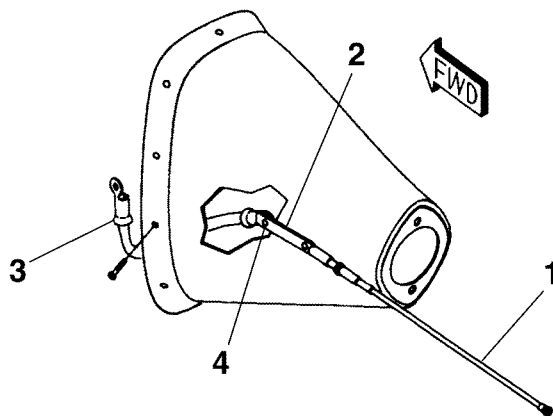
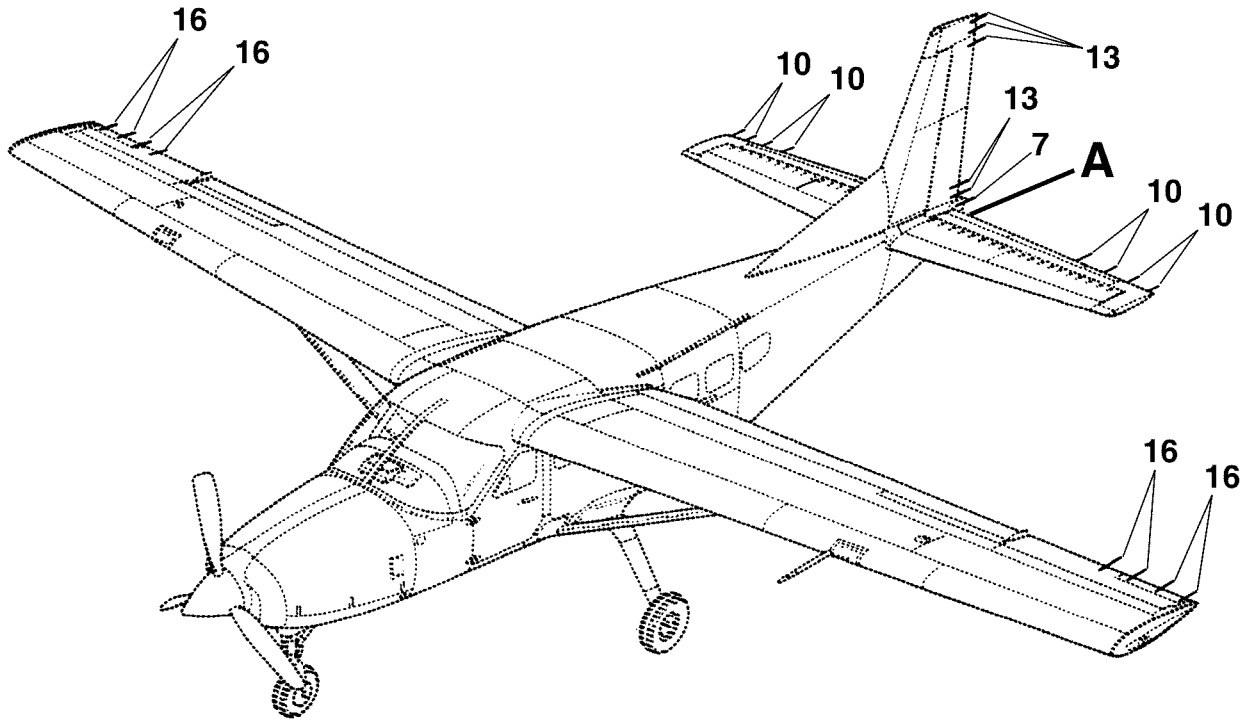
CESSNA®
MODEL 208
ILLUSTRATED PARTS CATALOG

FIG ITEM	PART NUMBER	NOMENCLATURE	UNITS PER ASSY		
			1	2	3
01		AUDIO PANEL INSTALLATION	0500	& ON	RF
-			B2000	& ON	
1	S3100-381	. AUDIO PANEL-LEFT GMA-1347 ALT FOR 011-00809-00 (MOD 2 & ON) V0TRC3	0500	0650	01 R
			B2000	B5500	
1A	S3100-381	. AUDIO PANEL-RIGHT GMA-1347 ALT FOR 011-00809-00 (MOD 2 & ON) V0TRC3	0533	0650	01 R
		OPTIONAL SECOND AUDIO PANEL INSTALLATIONS	B2303	B5500	
2	011-03568-20	. AUDIO PANEL-LEFT AND RIGHT GMA 1360D	0651	& ON	02 R
			B5501	& ON	
3	2614080-8	. BRACKET-AUDIO PANEL	0500	0650	01 R
			B2000	B5500	
- 3A	2614080-8	. BRACKET-AUDIO PANEL	0651	& ON	02 R
			B5501	& ON	
4	011-00812-00	. BACKPLATE ASSEMBLY V0TRC3	0500	0650	01 R
			B2000	B5500	
- 4A	011-00812-00	. BACKPLATE ASSEMBLY V0TRC3	0651	& ON	02 R
			B5501	& ON	
5	115-00427-00	. MOUNTING RACK V0TRC3	0500	0650	01 R
			B2000	B5500	
- 5A	115-00427-00	. MOUNTING RACK V0TRC3	0651	& ON	02 R
			B5501	& ON	
- 6	011-01019-00	. NUTPLATE KIT V0TRC3			02
- 7	011-01001-00	. NUTPLATE ASSEMBLY V0TRC3			01
		ATTACHING PARTS			
8	MS35206-227	. SCREW	0500	0650	04 R
			B2000	B5500	
- 8A	MS35206-227	. SCREW	0651	& ON	08 R
			B5501	& ON	
9	MS21042L06	. NUT	0500	0650	04 R
			B2000	B5500	
- 9A	MS21042L06	. NUT	0651	& ON	08 R
			B5501	& ON	
- 10	NAS1291-06	. NUT-ALT FOR MS21042L06	0500	0650	04 R
			B2000	B5500	
- 10A	NAS1291-06	. NUT-ALT FOR MS21042L06	0651	& ON	08 R
			B5501	& ON	
		—*—			
11	DMB20-20	. COUPLER V55635			01
12	8718610-3	. COUPLER BRACKET ASSY			01
		ATTACHING PARTS			
13	MS35206-228	. SCREW			02
		—*—			
14		. LED AVIONICS CIRCUIT BREAKER PANEL-REFER TO 33-10-00 FIGURE			RF
		01A			

- ITEM NOT ILLUSTRATED

CESSNA®
MODEL 208
 ILLUSTRATED PARTS CATALOG

A25039



DETAIL A

THIS SUBTEXT CREATED WITH UPPER LEFT LOAD POINT
 AIRPLANES 20800146 AND ON

STATIC WICK DISCHARGE INSTALLATION
 FIGURE 01 (SHEET 1)

XXXXTXXXX

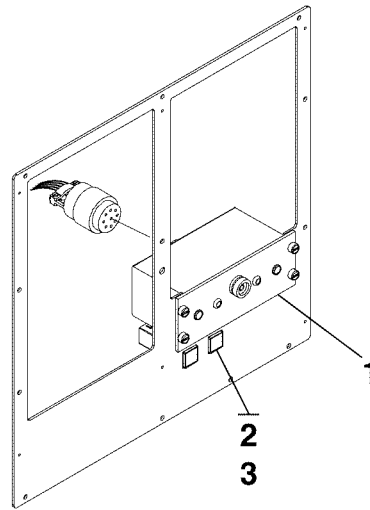
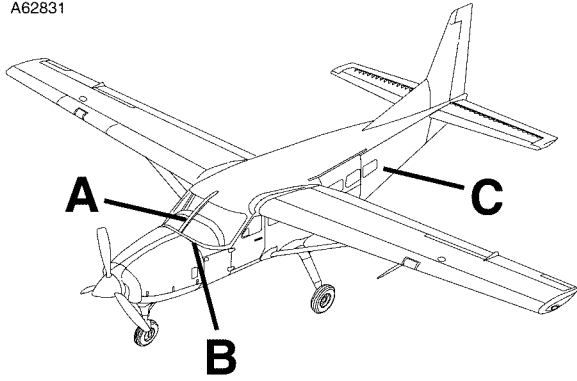
CESSNA®
MODEL 208
 ILLUSTRATED PARTS CATALOG

FIG ITEM	PART NUMBER	NOMENCLATURE	UNITS PER ASSY		
			1	2	3
01		STATIC WICK DISCHARGE INSTALLATION			RF R
-					
1	C592001-0206	. WICK-STATIC DISCHARGER USED WITH LONG CHORD RUDDER	0146	& ON	01 R
2	C592001-0205	. BASE-STATIC DISCHARGER			01 R
3	1570102-21	. STRAP ASSY-GROUND USED WITH LONG CHORD RUDDER	0146	& ON	01 R
		ATTACHING PARTS			
4	MS35206-229	. SCREW	0146	& ON	01 R
- 5	NAS1149F0332P	. WASHER	0146	& ON	01 R
- 6	MS21044N06	. NUT	0146	& ON	01 R
		—*—			
7	C592001-0206	. WICK-STATIC DISCHARGER STINGER			01 R
- 8	C592001-0205	. BASE-STATIC DISCHARGER			01 R
		ATTACHING PARTS			
- 9	S2230-1	. RIVET- BLIND			02 R
		—*—			
10	C592001-0206	. WICK-STATIC DISCHARGER ELEVATOR LH AND RH			08 R
- 11	C592001-0205	. BASE-STATIC DISCHARGER			08 R
		ATTACHING PARTS			
- 12	S2230-1	. RIVET-BLIND			02 R
		—*—			
13	C592001-0206	. WICK-STATIC DISCHARGER RUDDER			05 R
- 14	C592001-0205	. BASE-STATIC DISCHARGER			05 R
		ATTACHING PARTS			
- 15	S2230-1	. RIVET-BLIND			02 R
		—*—			
16	C592001-0206	. WICK-STATIC DISCHARGER AILERON LH AND RH			08 R
- 17	C592001-0205	. BASE-STATIC DISCHARGER			08 R
		ATTACHING PARTS			
- 18	S2230-1	. RIVET-BLIND			02 R
		—*—			

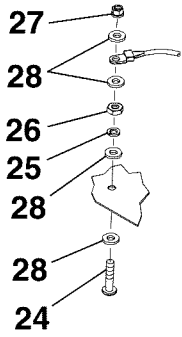
- ITEM NOT ILLUSTRATED

CESSNA®
MODEL 208
 ILLUSTRATED PARTS CATALOG

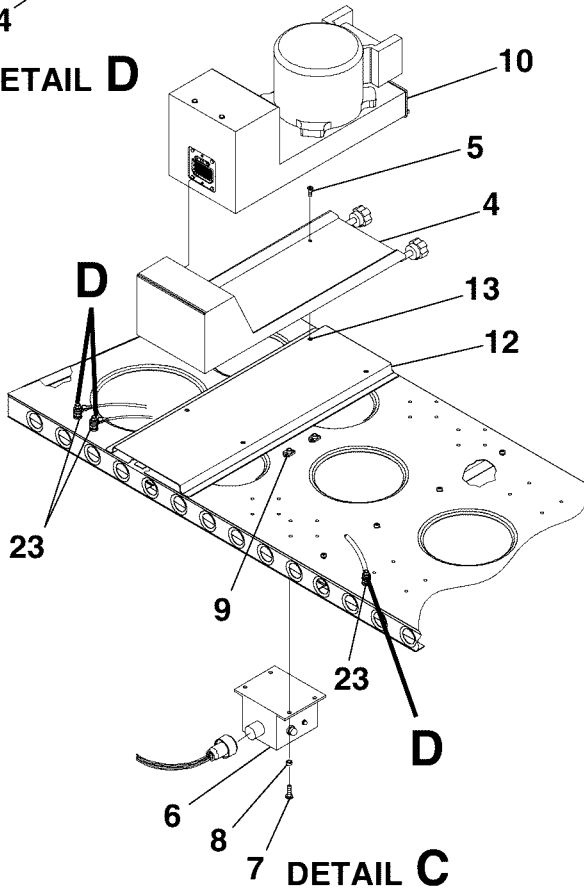
A62831



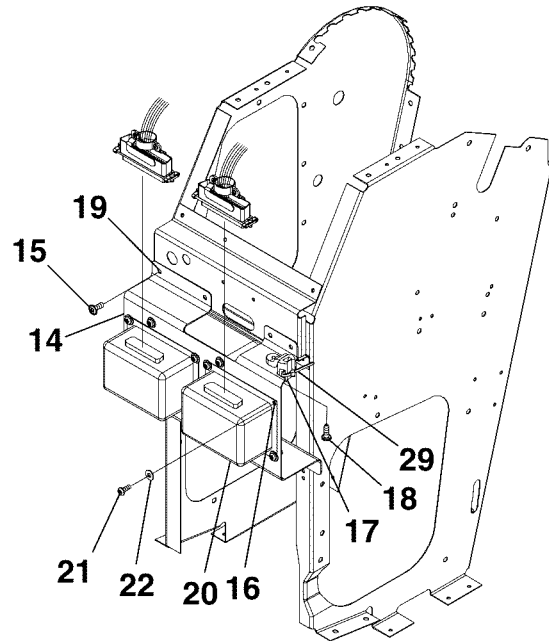
DETAIL A



DETAIL D



DETAIL C



DETAIL B

COCKPIT VOICE RECORDER
 FIGURE 01 (SHEET 1)

2610T7002
 A2618T1390
 B2618T1391
 C2618T1392
 D2618T1392

CESSNA®
MODEL 208
ILLUSTRATED PARTS CATALOG

FIG ITEM	PART NUMBER	NOMENCLATURE	UNITS		
			PER ASSY		
01		COCKPIT VOICE RECORDER			
-			B0952	& ON	RF
1	2100-1020-02	. COCKPIT VOICE RECORDER V06141	B0952	B1051	01
- 1A	S162-0030-00	. COCKPIT VOICE RECORDER CONTROL UNIT	B1052	& ON	01
2	LEDXX17HK30499	. ANNUNCIATOR V32245			01
3	LED-40-17	. SWITCH BODY V32245			01
- 3A	95-40-17	. SWITCH BODY-ALT FOR LED-40-17 V32245			01
4	404.50S1/DPXB0	. MOUNTING TRAY V13636			01
		ATTACHING PARTS			
5	MS24694-S5	. SCREW			04
		—*—			
6	6895-D-2-X-5-5	. IMPACT SWITCH V14923			01
		ATTACHING PARTS			
7	MS35207-264	. SCREW			04
8	NAS43DD3-8FC	. SPACER			04
9	MS21075L3N	. NUTPLATE			04
		—*—			
10	S3100-392	. COCKPIT VOICE RECORDER FSO S3100-430	B1052	B1189	NP
- 11	S3100-430	. COCKPIT VOICE RECORDER VENDOR P/N 2100-1020-02	B1190	& ON	01
12	2601495-13	. BRACKET ASSY			01
13	MS21075L08N	. NUTPLATE			04
14	2601495-15	. BRACKET ASSY			01
		ATTACHING PARTS			
15	AN525-832R9	. SCREW			06
		—*—			
16	MS21075L06N	. NUTPLATE			08
17	S4132-1	. ANCHOR			01
		ATTACHING PARTS			
18	S1021Z8-8	. SCREW			01
		—*—			
19	MS21051L06K	. NUTPLATE			06
20	M1090	. COCKPIT VOICE RECORDER ADAPTER V56081			01
		ATTACHING PARTS			
21	MS35206-228	. SCREW			08
22	NAS1149FN632P	. WASHER			08
		—*—			
23	9256010-1	. STUD ASSY			03
24	MS35207-266	. SCREW			03
25	MS35338-157	. LOCK WASHER			03
26	MS35650-305T	. NUT			03
27	MS21043-3	. NUT			03
28	NAS1149D0363J	. WASHER			12
29	S2209-1	. TIE			01
- 30		. CIRCUIT BREAKER REFER TO 24-50-01 FIGURE 02			RF
- 31		. PLACARD CIRCUIT BREAKER REFER TO 11-N-31 FIGURE 01			RF

- ITEM NOT ILLUSTRATED